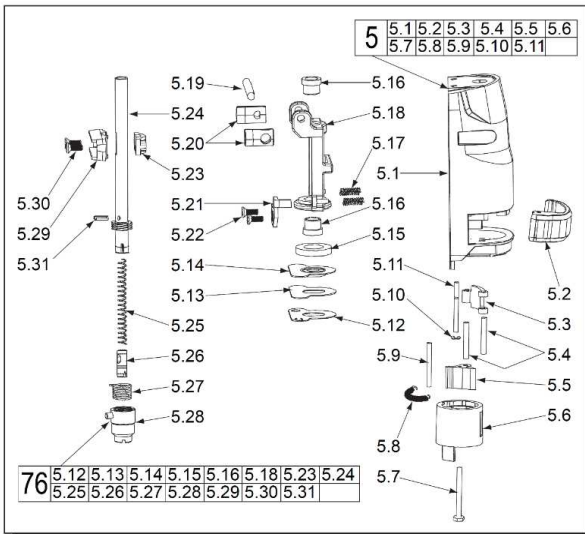


00 0

EXAMPLE:
Component Parts (Small #) Are Included
When Ordering The Assembly (Large #).



	<div> HD18 JS SERVICE PARTS LIST TTI Model Number: 018 032 020 M18™ HEAVY DUTY JIGSAW </div>	<div> Bulletin Date: May-18 Starting Serial Number: VERSION A - C2014 </div>
---	---	---

ITEM	PART NUMBER	PART DISCRIPTION	QTY (PCS)
1	517609001	BLADE COVER	1
2	671775001	GUARD WIRE	1
3	660414009	M4 X 9.0MM SCREW	2
4	660414008	M4 X 16MM SCREW	3
5	220049001	GEARCASE COVER ASSEMBLY	1
5.1	-	GEARCASE COVER	1
5.2	-	LEVER	1
5.3	-	LINK ROD	1
5.4	-	2.8 X 14 PIN	2
5.5	513791001	SLEEVE LEVER	1
5.6	513792001	ROTATE SLEEVE	1
5.7	660837003	M3 X 2.5MM SCREW	1
5.8	671922001	TENSION SPRING	1
5.9	-	2.5 X 25 PIN	1
5.10	-	E-RING	1
5.11	-	4.0 X 30 PIN	1
5.12	-	COVER PLATE	1
5.13	-	RUBBER SEAL	1
5.14	-	FELT SEAL	1
5.15	-	FIBER SEAL	1
5.16	-	BUSHING	2
5.17	671780001	COMPRESSION SPRING	2
5.18	-	SAW BAR GUIDE	1
5.19	671777001	5 X 4 6 PIN	1
5.20	513663001	LEVER	2
5.21	631498001	PRESSING PLATE	1
5.22	661063001	M4 FLAT HEAD SCREW	6
5.23	-	COVER PLATE	1
5.24	-	SAW BAR	1
5.25	-	COMPRESSION SPRING	1
5.26	-	CLAMP PLATE	1
5.27	-	TORSION SPRING	1
5.28	-	BLADE CLAMP SLEEVE	1
5.29	-	CONNECTING LINK	1
5.30	-	LINK ROD	2
5.31	-	PIN	1

	<div> HD18 JS SERVICE PARTS LIST TTI Model Number: 018 032 020 M18™ HEAVY DUTY JIGSAW </div>	<div> Bulletin Date: May-18 Starting Serial Number: VERSION A - C2014 </div>
---	---	---

ITEM	PART NUMBER	PART DISCRIPTION	QTY (PCS)
6	631267002	SUPPORT BLOCK	1
7	660400007	M4 X 44MM SCREW	2
8	902151001	GASKET	1
9	671441002	NEEDLE BEARING	1
10	-	BLADE GUIDE HOLDER	1
11	-	BLADE GUIDE	1
12	-	NEEDLE BEARING	1
13	-	4.0 X 11 PIN	1
14	-	E-RING	2
15	671820001	5.0 X 23.5 PIN	1
16	671824001	5.0 X 9.6 PIN	1
17	-	5.0 X 22 PIN	2
18	661064001	M4 X 12MM SCREW	2
19	670030004	SPRING WASHER	3
20	680814001	E-RING	1
21	671770001	ECCENTRICITY PLATE	1
22	672140001	DRIVE PLATE	1
23	672139001	COUNTER BALANCE	1
24	-	4 X 23 PIN	1
25	-	OUTPUT GEAR	1
26	-	8 X 43 PIN	1
27	660414011	M4 X 25MM SCREW	2
28	660414023	M4 X 24MM SCREW	2
29	-	NEEDLE BEARING	2
30	671771001	WASHER	1
31	-	RUBBER KNOCK	2
32	-	2.5 X 7.5 PIN	3
33	-	GEARCASE	1
34	671997001	E-RING	1
35	-	ORBITAL ADJUSTMENT SHAFT	1
36	-	ORBITAL ADJUSTMENT STOP	1
37	-	ORBITAL ADJUSTMENT LEVER	1
38	-	SPIRAL PINION SHAFT	1
39	-	BALL BEARING	1
40	-	FAN	1
41	-	DRIVE COUPLER	1
42	660219021	M5 X 8MM SCREW	2

	<div> HD18 JS SERVICE PARTS LIST TTI Model Number: 018 032 020 M18™ HEAVY DUTY JIGSAW </div>	<div> Bulletin Date: May-18 Starting Serial Number: VERSION A - C2014 </div>
---	---	---

ITEM	PART NUMBER	PART DISCRIPTION	QTY (PCS)
43	641277001	MOTOR MOUNT	1
44	-	DRIVE PINION	1
45	-	18V DC MOTOR	1
46	517607001	LOCK BUTTON	1
47	-	18V DC SWITCH	1
50	641007001	CLAMPING CLAW	1
51	340610001	AIRFLOW BAFFLE	1
52	-	M6 X 31MM BOLT	1
53	-	FIX WEDGE	1
54	302689001	ADJUSTABLE BASE LEVER	1
55	672164001	WASHER	1
56	640965002	ADJUSTABLE SHOE	1
57	513409001	ANTI-SPLINTERING INSERT	1
58	631413001	SLIDE PLATE	1
59	660213023	M4 X 13MM SCREW	2
60	513410004	PLASTIC COVER	1
61	631438002	SHOE RETAINER	1
62	631083002	M6 X 7 NUT	1
63	672059002	WASHER	1
67	-	TERMINAL BLOCK ASSEMBLY	1
68	691093001	COMPRESSION SPRING	1
69	-	SUPPORT HOUSING (LEFT HANDLE HALF)	1
70	-	HOUSING COVER (RIGHT HANDLE HALF)	1
71	660024030	M4 X 16MM SCREW	9
71a	660024028	M4 X 14MM SCREW	1
72	941300039	WARNING LABEL	1
73	941038251	SERVICE NAMEPLATE KIT	1
76	200941002	SPINDLE ASSEMBLY	1
77	200936002	GEAR ASSEMBLY	1
78	200984002	BLADE GUIDE ASSEMBLY	1
79	200727002	GEARCASE ASSEMBLY	1
80	200939002	ORBIT LEVER ASSEMBLY	1
81	200308003	PINION ASSEMBLY	1
82	200146061	MOTOR ASSEMBLY	1
83	200937002	TENSION LEVER ASSEMBLY	1
84	200985006	SWITCH ASSEMBLY	1
85	200940007	HANDLE HALVES ASSEMBLY	1
86	302857002	CARRYING CASE	1
1200	-	TYPE J GREASE	1

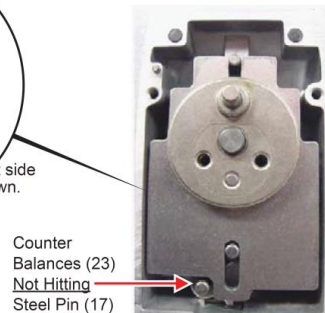
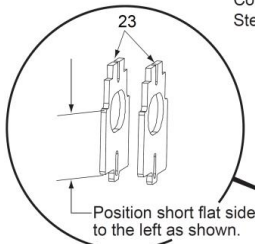
Service Notes for Cordless Jigsaw

IMPORTANT: Place both of the Counter Balance Blocks (23) into the Gearcase (33) with the shorter flat sides positioned to the left side in the Gearcase (as viewed from the front of tool).



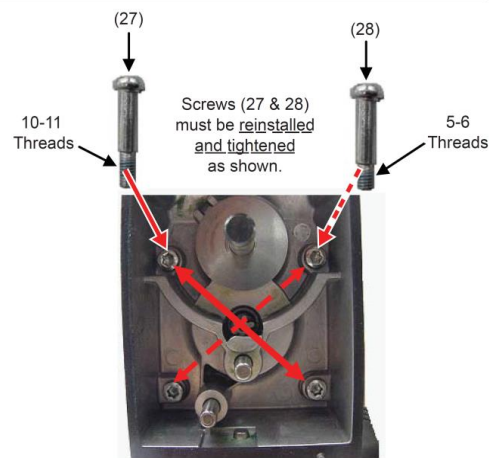
Counter Balances Installed INCORRECTLY

Counter Balances (23) come into contact with Steel Pin (17) inside Gearcase (33).



Counter Balances Installed CORRECTLY

Counter Balances (23) do not come into contact with Steel Pin (17) inside Gearcase (33). Approximately .065 clearance between bottom of Counter Balances and Steel Pin.



Front View of Gearcase

Overall length of screws are identical although length of threads are different

TORQUE SPECIFICATIONS			
Fig.	Part No.	Min. (Nm)	Max. (Nm)
3	660414009	1.695	2.825
4	660414008	1.695	3.39
5.7	660837003	0.452	0.678
5.22	661063001	1.695	2.825
5.30	-----	2.26	2.825
7	660400007	0.791	1.695
18	661064001	2.825	2.825
27	660414011	1.695	2.825
28	660414023	1.695	2.825
42	660219021	2.26	3.39
59	660213023	1.695	2.825
71	660024030	0.791	1.695

Service Notes for Cordless Jigsaw - continued

Disassembly

FIG. 1
18,19,20,21,26
NOTES:
Eccentricity Plate (21) Screws and Lock Washers (18-19) must be removed prior to removing E-clip (20) from Gearcase Pin (26) to prevent damaging the E-clip. See Fig. 1

33,38,39,40,41
Remove Motor Pinion Assembly (81) from Gearcase (33) by placing a 3/32" pin punch into the center counter bore of Pinion (38) and gently tapping assembly until removed from Gearcase (33). See Fig. 2

1,5
Remove Plastic Blade Cover (1) from the Gearcase Cover (5) by gently squeezing raised plastic tabs on both sides of cover simultaneously and pulling forward.

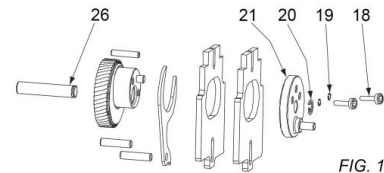


FIG. 1

Reassembly

42
Secure Motor Mount Plate Screws (42) with Blue Loctite® No. 44-22-0090 if removed.

18,19,20,21
E-clip (20) must be reinstalled onto Gearcase Pin (26) prior to installing Eccentricity Plate (21) Screws and Lock Washers (18-19) to prevent damaging E-clip. See Fig. 1

22,23,33
Bevel side of Counter Balance Plates (23) must face Rocker Arm Plate (22) when installed into Gearcase (33). (Reference assembly Illustration picture).

2,3,4,5,7,33
Reinstall Wire Guard (2) onto Gearcase (33) by positioning round prongs of guard thru Gearcase cover (5) and place wires into round holes provided in Gearcase (33) prior to securing Gearcase Screws (3-4-7). See Fig. 3

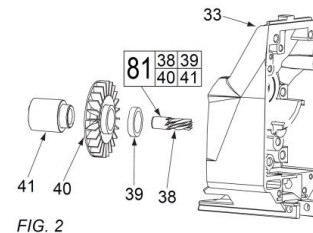


FIG. 2

LUBRICATION NOTES:

Use Type 'J' Grease, Item 1200

When servicing, remove 90-95% of the existing grease prior to installing Type "J". Original grease maybe similar in color but not compatible with "J"

Coat internal components of Gearcase (33) with approx. 1/4 oz. grease (front and back) prior to installing into Gearcase. (Lightly coat steel pins (17, 24, 26) inside Gearcase prior to reassembly)

Coat internal components of Gearcase Cover (5) with approx. 1/8 oz. grease and place another approx. 1/8 oz. grease in the top of the Gearcase Cover.

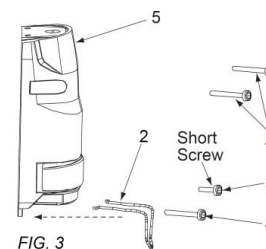
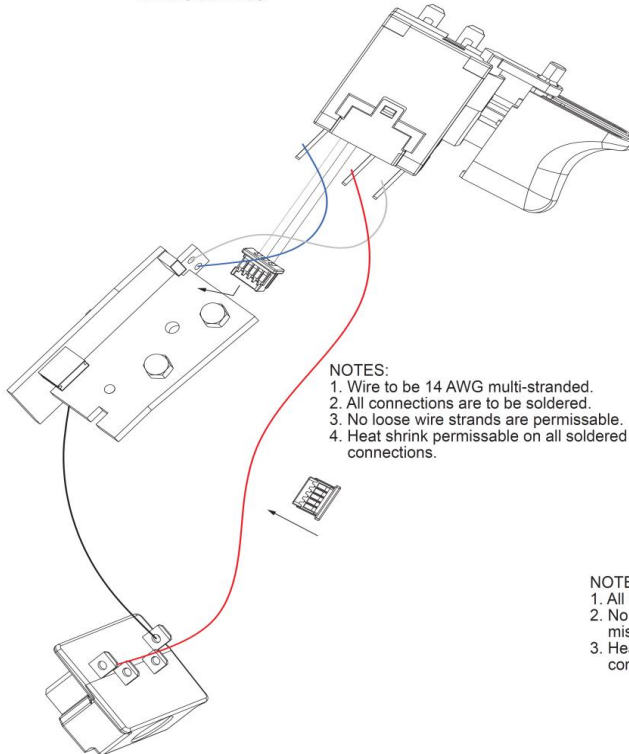


FIG. 3

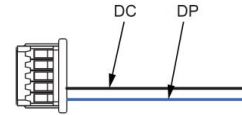
WIRING DETAILS



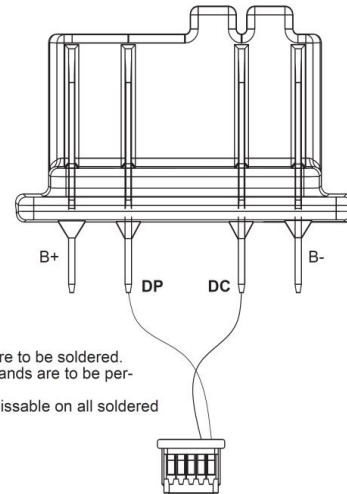
- NOTES:**
1. Wire to be 14 AWG multi-stranded.
 2. All connections are to be soldered.
 3. No loose wire strands are permissible.
 4. Heat shrink permissible on all soldered connections.

NOTE: White wire is routed above other wires except signal wires.

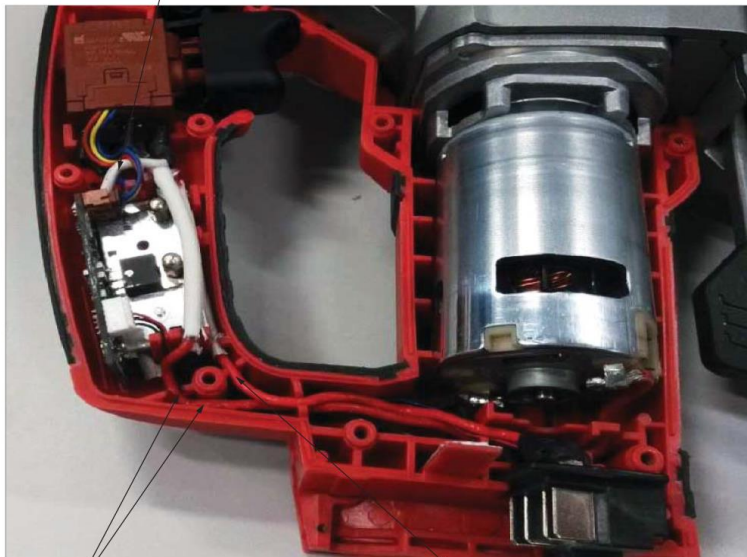
CONNECTOR DETAILS



- NOTES:**
1. Connector wires to be 28 AWG multi-stranded.
 2. Wires to be listed.



- NOTES:**
1. All connections are to be soldered.
 2. No loose wire strands are to be permissible.
 3. Heat shrink permissible on all soldered connections.



NOTE: Signal wires, black wire (from switch to motor) and red wire (from switch to motor) are routed through these wire traps. From bottom to top are: signal wires, black wire, and red wire.

NOTE: Black wire (from PCBA to terminal) and red wire (from switch to terminal) are routed through this wire trap. Red wire is above black wire.

INSERT CONNECTOR INTO THE BOTTOM OF THE SWITCH AS SHOWN. NOTE: THE CONNECTOR MUST BE FULLY SEATED.

AS AN AID TO REASSEMBLY, TAKE NOTICE OF WIRE ROUTING AND POSITION IN WIRE GUIDES AND TRAPS WHILE DISMANTLING TOOL.

BE CAREFUL AND AVOID PINCHING WIRES BETWEEN HANDLE HALVES WHEN ASSEMBLING.