



Milwaukee

M12 M18

Nothing but **HEAVY DUTY**

MILWAUKEE TOOL

Milwaukee Electric Tool Corporation
BROOKFIELD, WI 53005
USA
Tel: +1 (262) 781-3600 • Fax: +1 (262) 790-6333

Milwaukee Asia Office
29/F, Tower 2, Kowloon Commerce Centre,
51 Kwai Cheong Road, Kwai Chung, Hong Kong
Tel: +852-2492-2181 • Fax: +852-2490-4778

Distributed by:

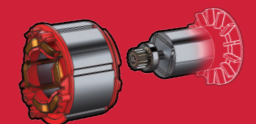
5/10/2020

All data incl. service and warranty conditions as well as product range are subject to change without notice. Pictures not binding. No liability for printing errors or mistakes. © 2020 Milwaukee Electric Tool Corporation. All trademarks are owned by Techtronic Cordless GP unless otherwise stated.

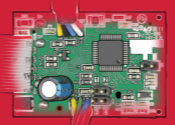
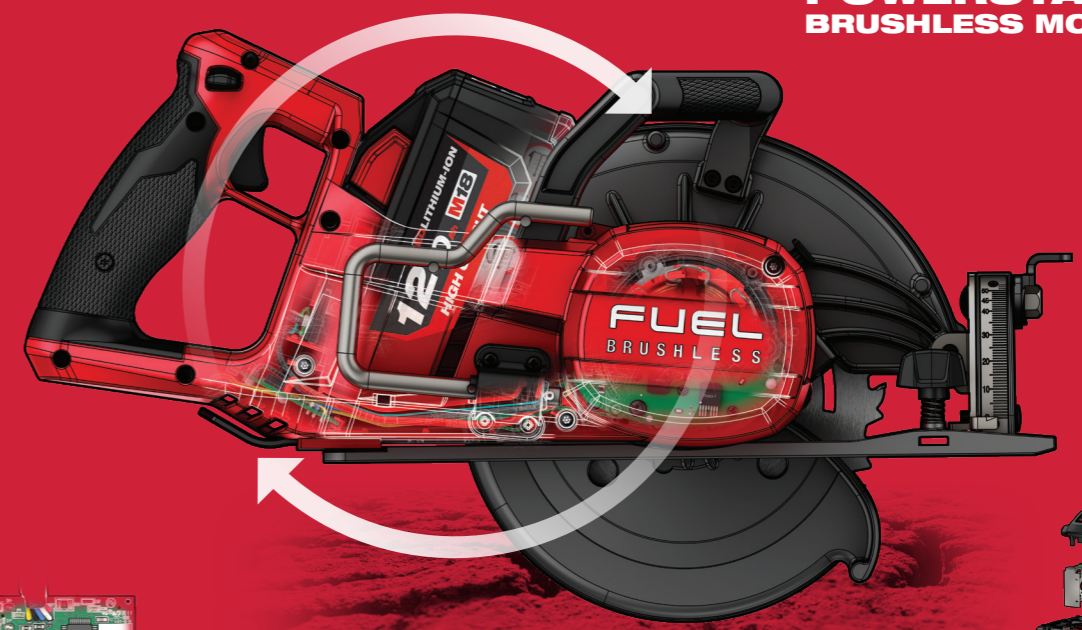
www.milwaukeetool.asia

Milwaukee

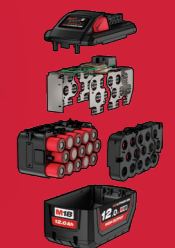
M18 FUEL
DRIVEN TO OUTPERFORM.



**POWERSTATE™
BRUSHLESS MOTOR**



**REDLINK PLUS™
INTELLIGENCE**



**REDLITHIUM™-ION
BATTERY PACK**

M18 FCSRH66
**M18 FUEL
190MM REAR
HANDLE
CIRCULAR
SAW**

GENERATES
**CORDED
POWER**

**FASTER
THAN
CORDED**

UP TO
**570 CUTS
PER CHARGE**



DRIVEN TO OUTPERFORM.

M18 FUEL is engineered for the most demanding tradesmen in the world. Delivering unrivaled performance in a compact structure, all M18 FUEL products feature three MILWAUKEE exclusive innovations - the POWERSTATE Brushless Motor, REDLITHIUM-ION Battery Pack and REDLINK PLUS Intelligence Hardware and Software - that deliver unmatched power, run-time and durability.

M18 FUEL

REDLINK PLUS INTELLIGENCE

Communication between battery and motor for maximum power and efficiency

MULTI SIZE RAFTER HOOK

Hang on a variety of jobsite materials

POWERSTATE BRUSHLESS MOTOR

Generates Corded Power

LED LIGHT

Better visibility in low light situations



REDLITHIUM-ION BATTERY

VAC ADAPTOR PORT

Easily connect a vac adaptor to manage dust during cuts

MAGNESIUM GUARDS

Superior durability from drops and abuse

ACCESSORIES



190 x 30mm 24T For Wood - Fast Cut
4932471300



190 x 30mm 36T For Wood - Fast Cut
4932471301

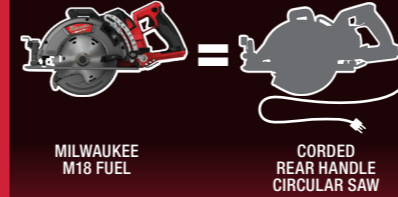


190 X 30mm 48T For Wood - Clean Cut
4932471380

M18 FUEL 190MM REAR HANDLE CIRCULAR SAW

GENERATES CORDED POWER

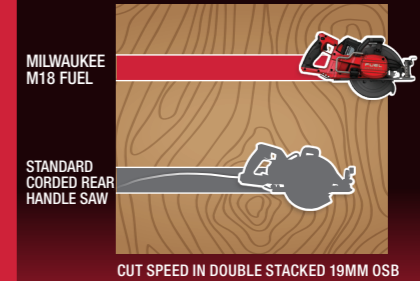
INCREASED PRODUCTIVITY



- Generates the power AC tools can receive from the outlet
- POWERSTATE Brushless Motor provides unmatched power

FASTER THAN CORDED

FASTER CUTS



- 5,800 RPM for fast cutting in all materials
- REDLINK Plus Intelligence constantly monitors battery and motor to help maintain the blade's speed

UP TO 570 CUTS PER CHARGE

LESS DOWN TIME



- REDLITHIUM-ION High Output 12.0Ah Battery delivers more work per charge than any other pack on the market



SPECIFICATIONS

DESCRIPTION	SPECIFICATIONS
RPM	5,800
Bore Size	30 mm
Cut Depth	0° - 66mm / 45° - 48mm / 50° - 46mm

DESCRIPTION	SPECIFICATIONS
Maximum Bevel Capacity	50°
Blade diameter	190 mm
Weight (w/12.0Ah battery)	6.2 kg