



# M18 CHS355

SERVICE PARTS DIAGRAM

TTI Model Number: 086 251 004

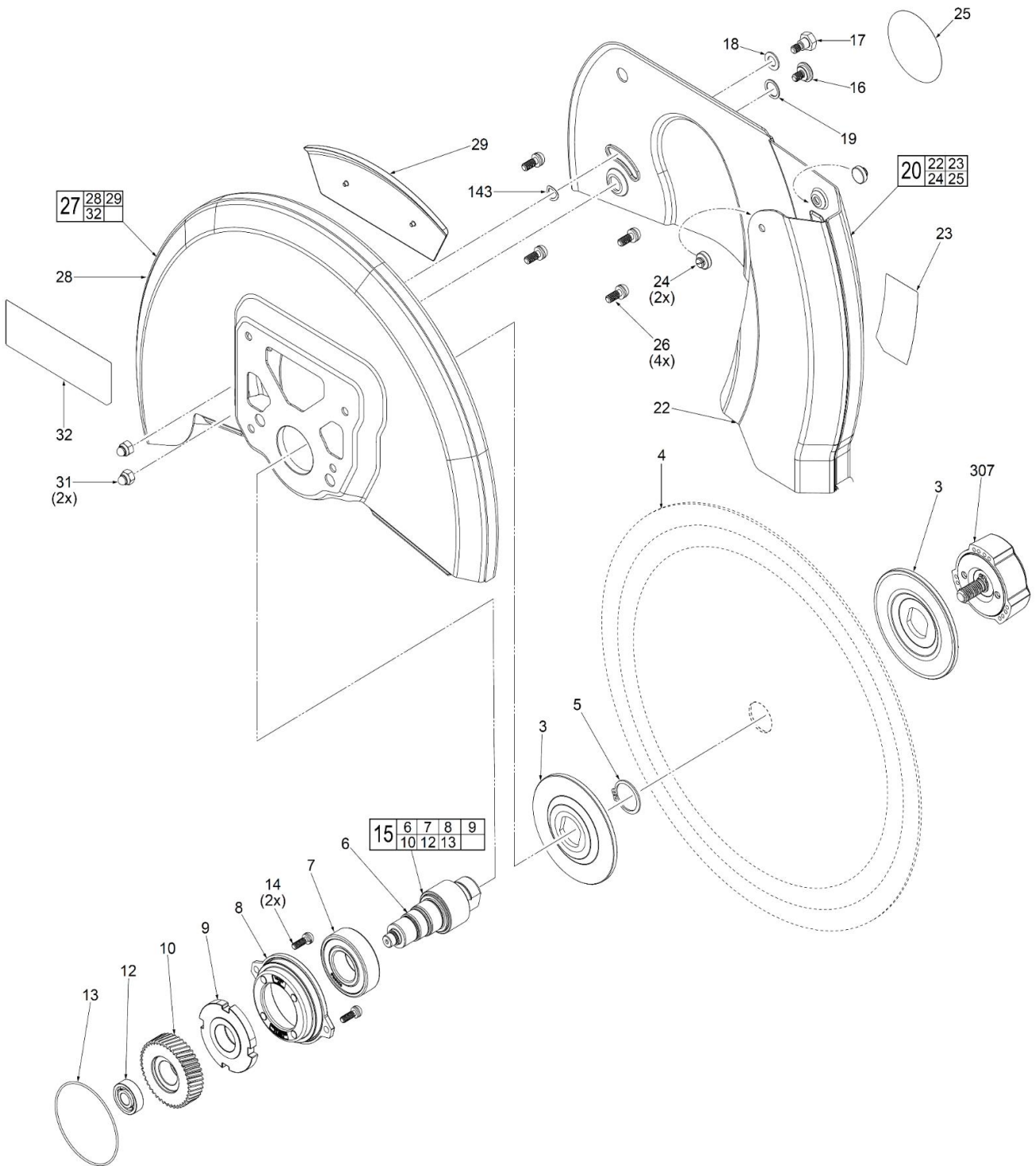
M18 FUEL™ 355MM ABRASIVE CHOP SAW

Bulletin Date:

**Jul-21**

Starting Serial Number:

VERSION A -





# M18 CHS355

SERVICE PARTS DIAGRAM

TTI Model Number: 086 251 004

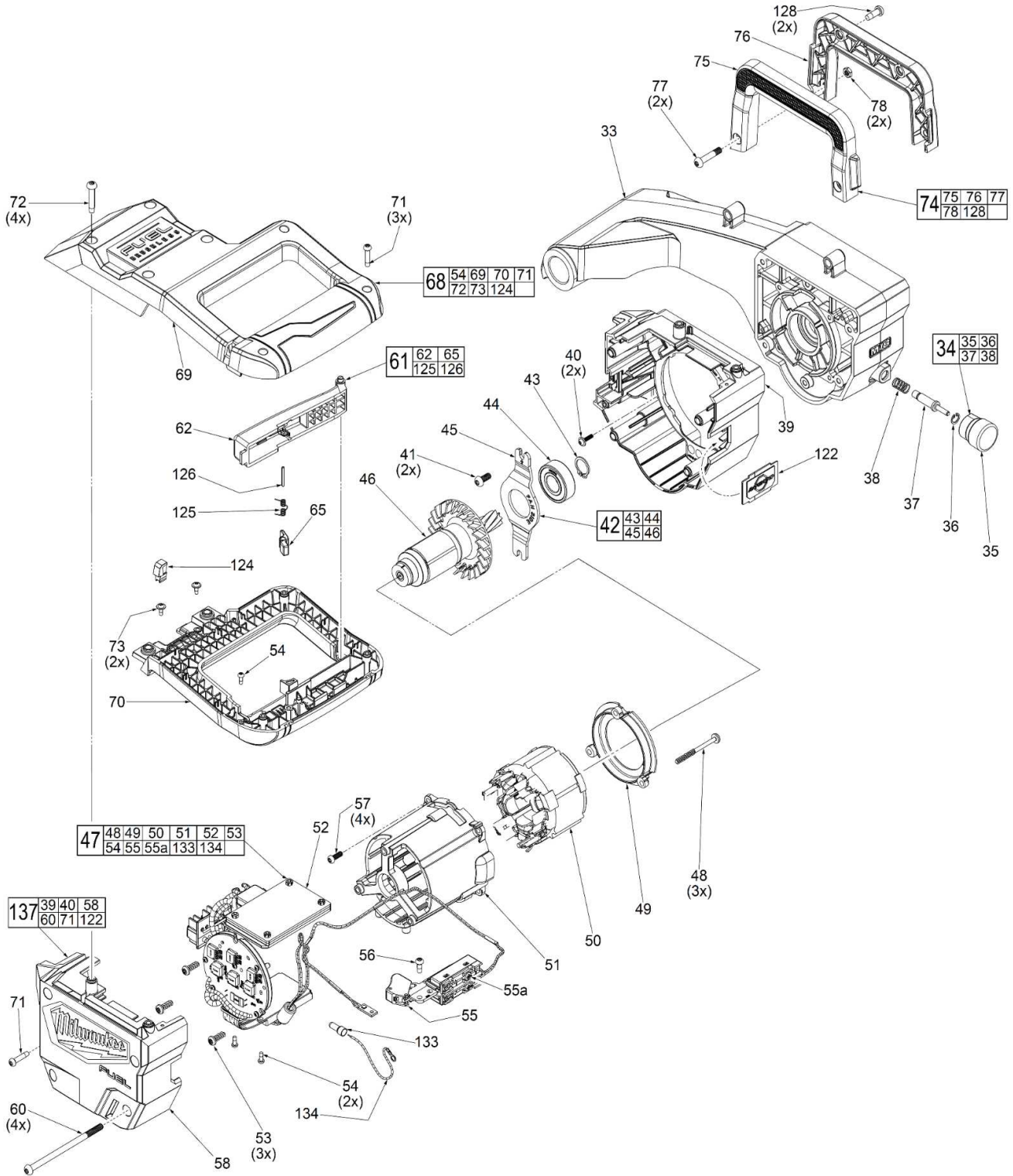
M18 FUEL™ 355MM ABRASIVE CHOP SAW

Bulletin Date:

**Jul-21**

Starting Serial Number:

VERSION A -





# M18 CHS355

SERVICE PARTS DIAGRAM

TTI Model Number: 086 251 004

M18 FUEL™ 355MM ABRASIVE CHOP SAW

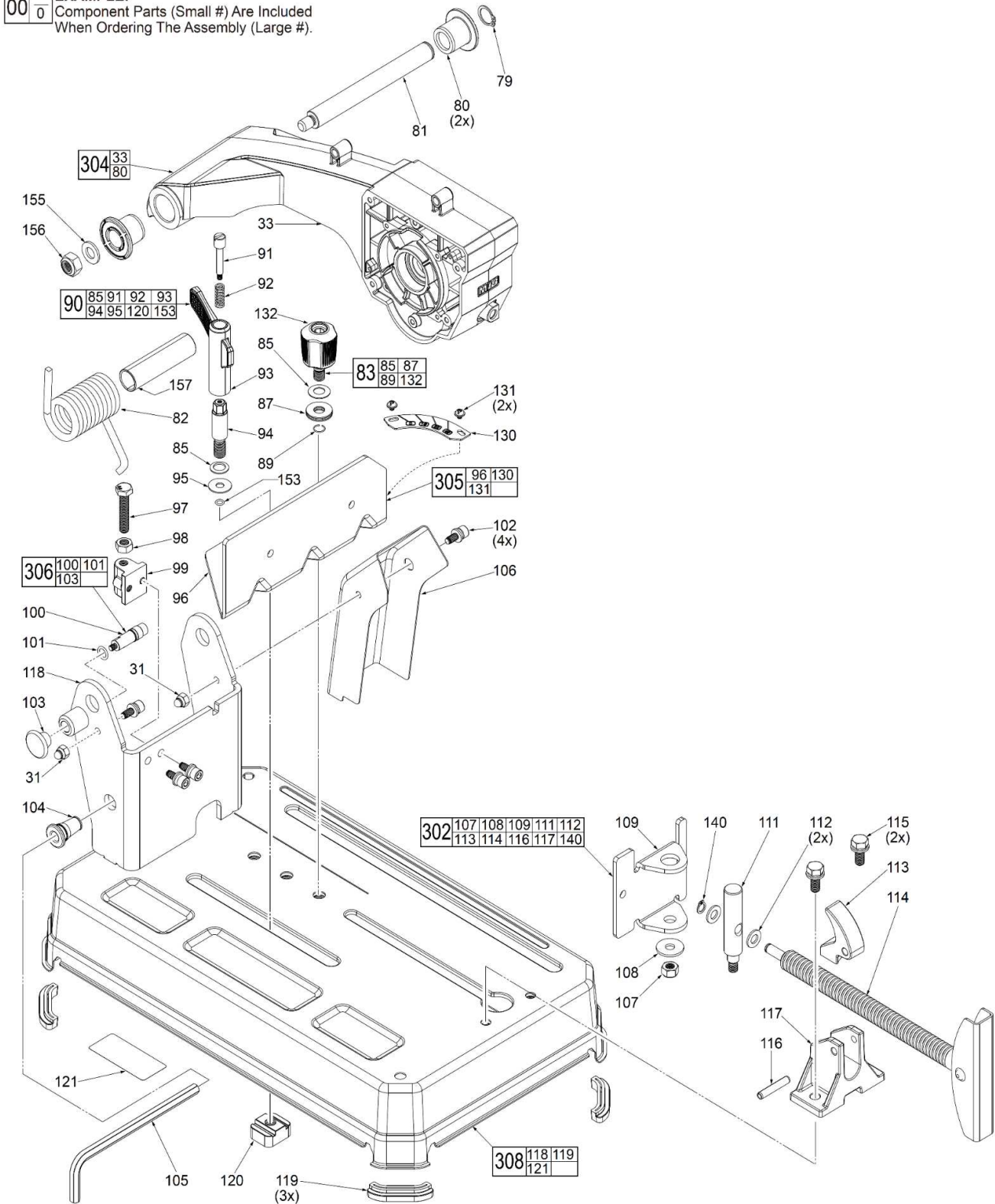
Bulletin Date:

Jul-21

Starting Serial Number:

VERSION A -

**EXAMPLE:**  
Component Parts (Small #) Are Included  
When Ordering The Assembly (Large #).





# M18 CHS355

SERVICE PARTS LIST

TTI Model Number: 086 251 004

**M18 FUEL™ 355MM ABRASIVE CHOP SAW**

**Bulletin Date:**

**Jul-21**

**Starting Serial Number:**

**VERSION A -**

ITEM	PART NUMBER	PART DESCRIPTION	QTY (PCS)
3	086251001003	WHEEL FLANGE	2
4	-	14" CUT-OFF WHEEL	1
5	086251001005	RETAINING RING, CNS9074-25 SFT	1
6	-	SPINDLE	1
7	-	BALL BEARING, 6205-2RS	1
8	-	SPINDLE HUB	1
9	-	WHEEL LOCK	1
10	-	HELICAL GEAR	1
12	-	BALL BEARING, 6000	1
13	-	RUBBER O-RING ID67XCS1.5	1
14	086251001014	SEMS SCR, M5x0.8x16 PNH T-25	2
15	086251001015	SPINDLE HUB ASSEMBLY, SERVICE KIT	1
16	086251001016	SHLDR SCR, M6x1.0x9 S4	1
17	086251001017	HEX HD SHLDR SCR, M6x1.0x9 S13	1
18	086251001018	PAPER WASHER, 8.5x15x1.0 MM	1
19	086251001019	PAPER WASHER, 12.1x15.8x0.8 MM	1
20	086251001170	LOWER GUARD ASSEMBLY, SERVICE KIT	1
22	-	LOWER GUARD	1
23	08625100404K	LOWER GUARD LABEL	1
24	086251001024	RUBBER BUMPER	2
25	08625100405K	ROUND LOWER GUARD LABEL	1
26	086251001026	SEMS SCR, M6x1.0x16 PNH T-30	4
27	086251001171	UPPER GUARD ASSEMBLY, SERVICE KIT ASIA VER	1
28	-	UPPER GUARD	1
29	-	LOGO PLATE ASSEMBLY	1
31	086251001031	HEXAGON DOMED CAP NUT, M6x1.0x6	4
32	08625100401K	RATING LABEL	1
33	-	UPPER ARM	1
34	086251001034	SPINDLE LOCK ASSEMBLY, SERVICE KIT	1
35	-	SPINDLE LOCK BUTTON	1
36	-	RETAINING RING, CNS9074-9 BORE	1
37	-	SPINDLE LOCK PIN	1
38	-	SPINDLE LOCK SPRING	1
39	-	HOUSING, INSIDE	1
40	086251001040	M SCR, M3x0.5x12 PWH T-10	2
41	086251001041	M SCR, M5x0.8x12 PNH T-25	2



# M18 CHS355

SERVICE PARTS LIST

TTI Model Number: 086 251 004

**M18 FUEL™ 355MM ABRASIVE CHOP SAW**

**Bulletin Date:**

**Jul-21**

**Starting Serial Number:**

**VERSION A -**

ITEM	PART NUMBER	PART DESCRIPTION	QTY (PCS)
42	086251001042	ROTOR ASSEMBLY, SERVICE KIT	1
43	-	RETAINING RING, CNS9074-15 SFT	1
44	-	BALL BEARING, 6202-2RS	1
45	-	BEARING RETAINER	1
46	-	ROTOR, MIL, BL70-35	1
47	086251001138	ELECTRONIC ASSEMBLY	1
48	-	PT SCR, K45x2.02x48 PNH T-20	3
49	-	BAFFLE	1
50	-	STATOR, BL70-35	1
51	-	INNER MOTOR HOUSING	1
52	-	PCBA ASSEMBLY, UL VER	1
53	-	PT SCR, K50x2.24x14 PNH T-20	3
54	086251001054	ST SCR, M3x1.058x8 PNH T-10	3
55	-	SWITCH, MQ1269.0616	1
55a	-	M3x7MM PAN HD PHILIPS SWITCH SCREW	2
56	086251001056	ST SCR, M4x1.411x16 PNH T-20	1
57	086251001057	M SCR, M4x0.7x12 PNH T-20	4
58	-	HOUSING, OUTSIDE	1
60	086251001060	M SCR, M5x0.8x90 PNH T-25	4
61	086251001061	TRIGGER PADDLE ASSEMBLY, SERVICE KIT	1
62	-	TRIGGER PADDLE	1
65	-	LOCK OFF LEVER	1
68	086251001068	D-HANDLE, SERVICE KIT	1
69	-	HANDLE, TOP	1
70	-	HANDLE, BOTTOM	1
71	086251001071	ST SCR, M4x1.411x18 PNH T-20	4
72	086251001072	ST SCR, M5x1.588x26 PNH T-25	4
73	086251001073	ST SCR, M3x1.058x8 PWH T-10	2
74	086251001074	CARRING HANDLE, SERVICE KIT	1
75	-	CARRING HANDLE-RIGHT	1
76	-	CARRING HANDLE-LEFT	1
77	086251001077	M SCR, M5x0.8x26 PNH T-25	2
78	086251001078	HEXAGON THIN NUT, M5x0.8x2.7MM	2
79	086251001079	RETAINING RING, CNS9074-16 SFT	1
80	-	PIVOT SLEEVE	2
81	086251001081	PIVOT SHAFT	1



# M18 CHS355

SERVICE PARTS LIST

TTI Model Number: 086 251 004

**M18 FUEL™ 355MM ABRASIVE CHOP SAW**

**Bulletin Date:**

**Jul-21**

**Starting Serial Number:**

**VERSION A -**

ITEM	PART NUMBER	PART DESCRIPTION	QTY (PCS)
82	086251001082	TORSION SPRING, PIVOT	1
83	086251001083	PIVOT BOLT ASSEMBLY, SERVICE KIT	1
85	086251001085	DISK SPRING, JIS B2706-L-20	2
87	-	NEEDLE BEARING, AXK1024	1
89	-	SNAP RING A 10 DIN 7993	1
90	086251001090	QUICK RELEASAE ASSEMBLY, SERVICE KIT	1
91	-	QUICK RELEASE PIN, M4x0.7	1
92	-	QUICK RELEASE SPRING	1
93	-	QUICK RELEASE LEVER	1
94	-	QUICK RELEAE STUD, M10x1.25	1
95	086251001095	FLAT WASHER, 10.5X20X2.0 MM	1
96	-	REAR VISE	1
97	086251001097	HEX HD SCR, M8x1.25x30 S13	1
98	086251001098	HEXAGON NUT, M8x1.25x6.5MM	1
99	086251001099	STOPPER BODY	1
100	-	LOCK DOWN PIN	1
101	-	RUBBER O-RING ID8xCS1.3	1
102	086251001102	SEMS SCR, M6x1.0x16 HEX SKT HD S5	4
103	-	LOCK BUTTON	1
104	086251001104	HEX KEY HOLDER	1
105	086251001105	HEXAGON KEY S=8MM L1=145MM L2=36MM	1
106	086251001106	SPARK DEFLECTOR	1
107	086251001107	NYLON LOCK NUT, M8	1
108	086251001108	FLAT WASHER, 8.4X24X2.0 MM	1
109	086251001109	CLAMP FENCE	1
111	086251001111	WISE SHAFT	1
112	086251001112	FLAT WASHER, 8.4X16X1.6 MM	2
113	086251001113	RELEASE NUT	1
114	086251001114	SCREW BAR ASSEMBLY	1
115	086251001115	SEMS SCR, M8x1.25x20 HEXH S13	2
116	086251001116	SPRING PIN, 6X35	1
117	086251001117	SEAT	1
118	-	BASE ASSEMBLY	1
119	086251001119	RUBBER FOOT	3
120	086251001120	M10 T-NUT BLOCK	1
121	08625100403K	BASE WARNING LABEL	1



# M18 CHS355

SERVICE PARTS LIST

TTI Model Number: 086 251 004

**M18 FUEL™ 355MM ABRASIVE CHOP SAW**

**Bulletin Date:**

**Jul-21**

**Starting Serial Number:**

**VERSION A -**

ITEM	PART NUMBER	PART DESCRIPTION	QTY (PCS)
122	-	LOGO PLATE, RAPID STOP	1
124	-	FEEDBACK LED LENS	1
125	-	SPRING, LOCK-OFF LEVER	1
126	-	PIN, LOCK-OFF LEVER	1
128	086251001128	ST SCR, M5x1.588x14 PNH T-25	2
130	086251001130	ADJUSTABLE SCALE	1
131	086251001131	SEMS SCR, M4x0.7x5 PNH T-20	2
132	-	KNOB ASSEMBLY	1
133	-	CLOSED-END TERMINAL	1
134	-	HV_GND 2 WIRE	1
137	086251001137	INSIDE&OUTSIDE HOUSING, SERVICE KIT	1
140	086251001140	RETAINING RING, STWN8	1
143	086251001143	WAVE WASHER, WW-8	1
153	086251001153	RUBBER O-RING ID7.8xCS1.9	1
155	086251001155	FLAT WASHER, 10.5x20x2.0 MM	1
156	086251001156	HEXAGON NUT, M10x1.5x10MM W/ NYLON	1
157	086251001157	SLEEVE	1
302	086251001302	VICE ASSEMBLY, SERVICE KIT	1
304	086251001304	UPPER ARM ASSEMBLY, SERVICE KIT	1
305	086251001305	REAR VISE ASSEMBLY, SERVICE KIT	1
306	086251001306	LOCK DOWN ASSEMBLY, SERVICE KIT	1
307	086251001307	TOOL FREE BOLT ASSEMBLY	1
308	086251001310	BASE ASSEMBLY	1



# M18 CHS355

SERVICE INSTRUCTION

TTI Model Number: 086 251 004

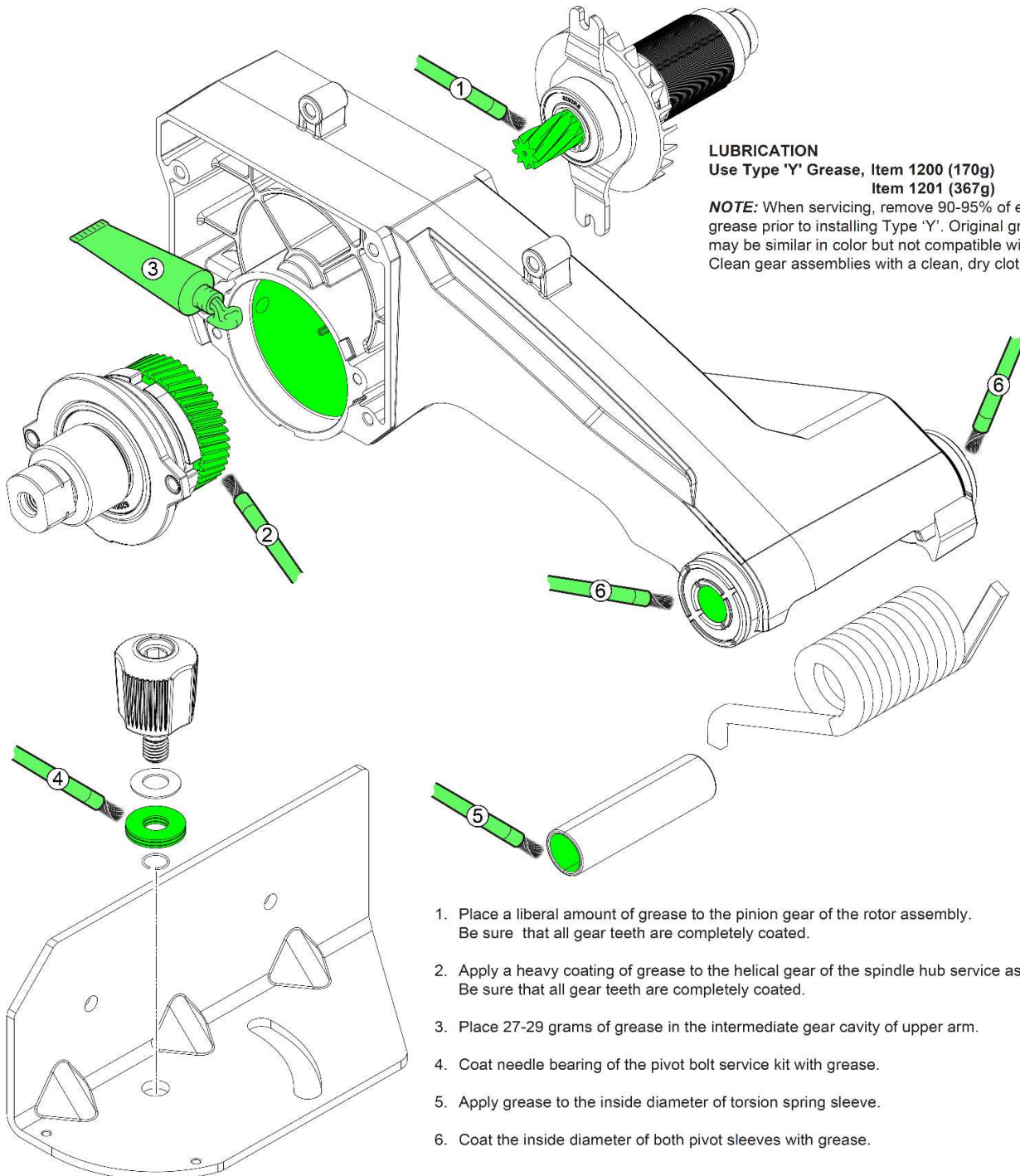
M18 FUEL™ 355MM ABRASIVE CHOP SAW

Bulletin Date:

Jul-21

Starting Serial Number:

VERSION A -



## LUBRICATION

Use Type 'Y' Grease, Item 1200 (170g)  
Item 1201 (367g)

**NOTE:** When servicing, remove 90-95% of existing grease prior to installing Type 'Y'. Original grease may be similar in color but not compatible with 'Y'. Clean gear assemblies with a clean, dry cloth.

1. Place a liberal amount of grease to the pinion gear of the rotor assembly. Be sure that all gear teeth are completely coated.
2. Apply a heavy coating of grease to the helical gear of the spindle hub service assembly. Be sure that all gear teeth are completely coated.
3. Place 27-29 grams of grease in the intermediate gear cavity of upper arm.
4. Coat needle bearing of the pivot bolt service kit with grease.
5. Apply grease to the inside diameter of torsion spring sleeve.
6. Coat the inside diameter of both pivot sleeves with grease.





# M18 CHS355

SERVICE INSTRUCTION

TTI Model Number: 086 251 004

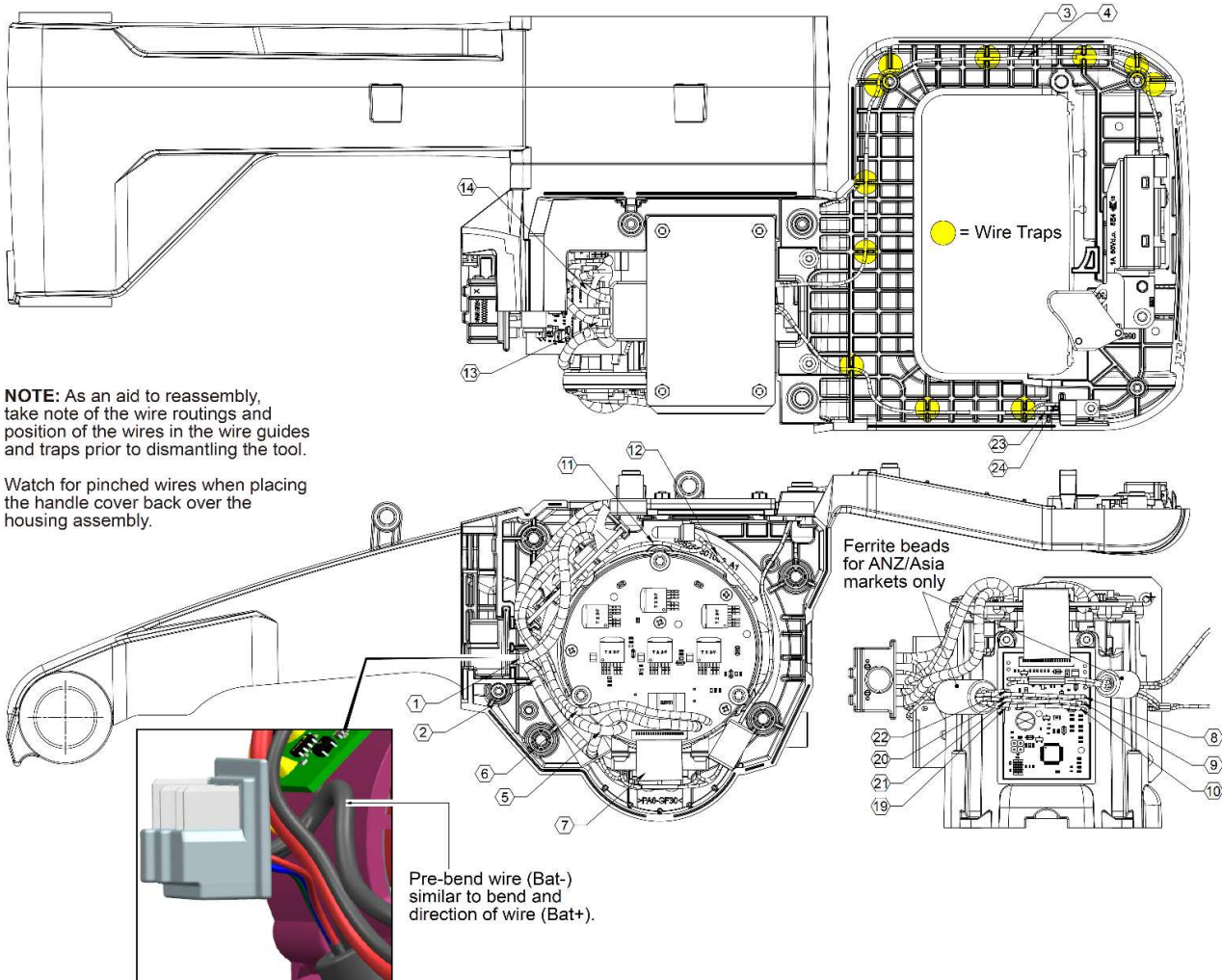
M18 FUEL™ 355MM ABRASIVE CHOP SAW

Bulletin Date:

**Jul-21**

Starting Serial Number:

**VERSION A -**



## WIRING SPECIFICATIONS

Wire No.	Wire Color	Origin or Gauge	Length	Wire Origin Designator
1	Red	AWG10	----	Battery Terminal Block to SSD Board
2	Black	AWG10	----	Battery Terminal Block to Power Board
3	Yellow	AWG26	----	Switch to Control Board
4	Yellow	AWG26	----	Switch to Control Board
5	Red	AWG10	----	SSD Board to Power Board
6	Black	AWG14	----	SSD Board to Power Board
7	White	Ribbon Cable	----	Control Board to Power Board
8	Red	AWG24	----	Battery Terminal Block to Control Board
9	Blue	AWG24	----	Battery Terminal Block to Control Board
10	Green	AWG24	----	Battery Terminal Block to Control Board
11	Black	AWG24	----	Battery Terminal Block to Close End Connector
12	Black	AWG24	----	Upper Arm to Close End Connector
13	Red	AWG14	----	SSD Board to Resistor
14	White	AWG14	----	SSD Board to Resistor
19	Red	AWG26	----	Control Board to SSD Board
20	Black	AWG26	----	Control Board to SSD Board
21	Yellow	AWG26	----	Control Board to SSD Board
22	Orange	AWG26	----	Control Board to SSD Board
23	Red	AWG26	----	Performance LED Board to Control Board
24	Black	AWG26	----	Performance LED Board to Control Board



# M18 CHS355

SERVICE INSTRUCTION

TTI Model Number: 086 251 004

**M18 FUEL™ 355MM ABRASIVE CHOP SAW**

**Bulletin Date:**

**Jul-21**

**Starting Serial Number:**

**VERSION A -**

## SCREW TORQUE SPECIFICATIONS

SEAT TORQUE					
FIG.	PART NO.	DESCRIPTION OF FASTENER	WHERE USED	(KG/CM)	(Nm)
91	-----	Quick Release Pin	Quick Release Service Kit	23±3	2.3±0.2
98	086251001098	Hex Nut	Stopper Body	180±20	18±2.2
102	086251001102	M6 x 16mm Skt. Hd. Sems Hex Rec.	Base/Stopper Body	70±5	6.8±0.5
103	-----	Lock Button	Lock Down Pin	23±3	2.3±0.2
107	086251001107	M8 Nylon Lock Nut	Vise Shaft	180±20	18±2.2
115	086251001115	M8 x 20mm Hex Hd. Sems Screw	Vise Mount/Base	140±10	13±0.9
131	086251001131	M4 x 5mm Pan Hd. Sems T-20 Scr.	Rear Vise/Adjustable Scale	26±3	2.5±0.2
132	-----	Knob Assembly	Rear Vise/Base	23±3	2.2±0.2
156	086251001156	Hex Nut	Pivot Shaft	80±5	7.8±0.5
40	086251001040	M3 x 12mm Pan Washer Hd. T-10	Inside Housing	9±1	0.8±0.1
41	086251001041	M5 x 12mm Pan Hd. T-25 Screw	Bearing Retainer	33±3	3.2±0.2
48	-----	K45 x 48mm Pan Hd. PT T-20 Screw	Baffle/Stator/Inner Motor Housing	25±3	2.4±0.2
53	-----	K50 x 14mm Pan Hd. PT T-20 Screw	PCBA/Inner Motor Housing	14±3	1.4±0.2
54	086251001054	M3 x 8mm Pan Hd. ST T-10 Screw	PCBA	7.5±1.5	0.7±0.1
55a	-----	M3 x 7mm Pan Hd. PH Switch Scr.	On-Off Switch	10±2	0.9±0.1
56	086251001056	M4 x 16mm Pan Hd. ST T-20 Screw	On-Off Switch/D-Handle-Bottom	14±2	1.4±0.1
57	086251001057	M4 x 12mm Pan Hd. T-20 Mach. Scr.	Inner Motor Housing	17±3	1.9±0.2
60	086251001060	M5 x 90mm Pan Hd. T-25 Mach. Scr.	Outside Housing	23±3	2.3±0.2
71	086251001071	M4 x 18mm Pan Hd. ST T-20 Screw	Outside Housing	18±2	1.7±0.1
72	086251001072	M5 x 26mm Pan Hd. ST T-25 Screw	D-Handle-Top	35±3	3.4±0.2
73	086251001073	M3 x 8mm PWH Hd. ST T-10 Screw	D-Handle-Bottom	3±.25	0.3
77	086251001077	M5 x 26mm Pan Hd. T-25 Mach. Scr.	Carrying Handle	23±3	2.3±0.2
128	086251001128	M5 x 14mm Pan Hd. ST T-25 Screw	Carrying Handle	23±3	2.3±0.2
14	086251001014	M5 x 16mm Pan Hd. Sems T-25 Scr.	Spindle Hub	40±3	3.8±0.2
16	086251001016	M6 Shoulder Screw	Lower Guard	40±3	3.8±0.2
17	086251001017	M6 Shoulder Screw	Lower Guard	40±3	3.8±0.2
26	086251001026	M6 x 16mm Pan Hd. Sems T-30 Scr.	Upper Guard	80±5	7.8±0.5

Red denotes critical torque value