



M18 CBLPD

SERVICE PARTS DIAGRAM

TTI Model Number: 018 306 015

M18™ BRUSHLESS PERCUSSION DRILL

Bulletin Date:

Feb-20

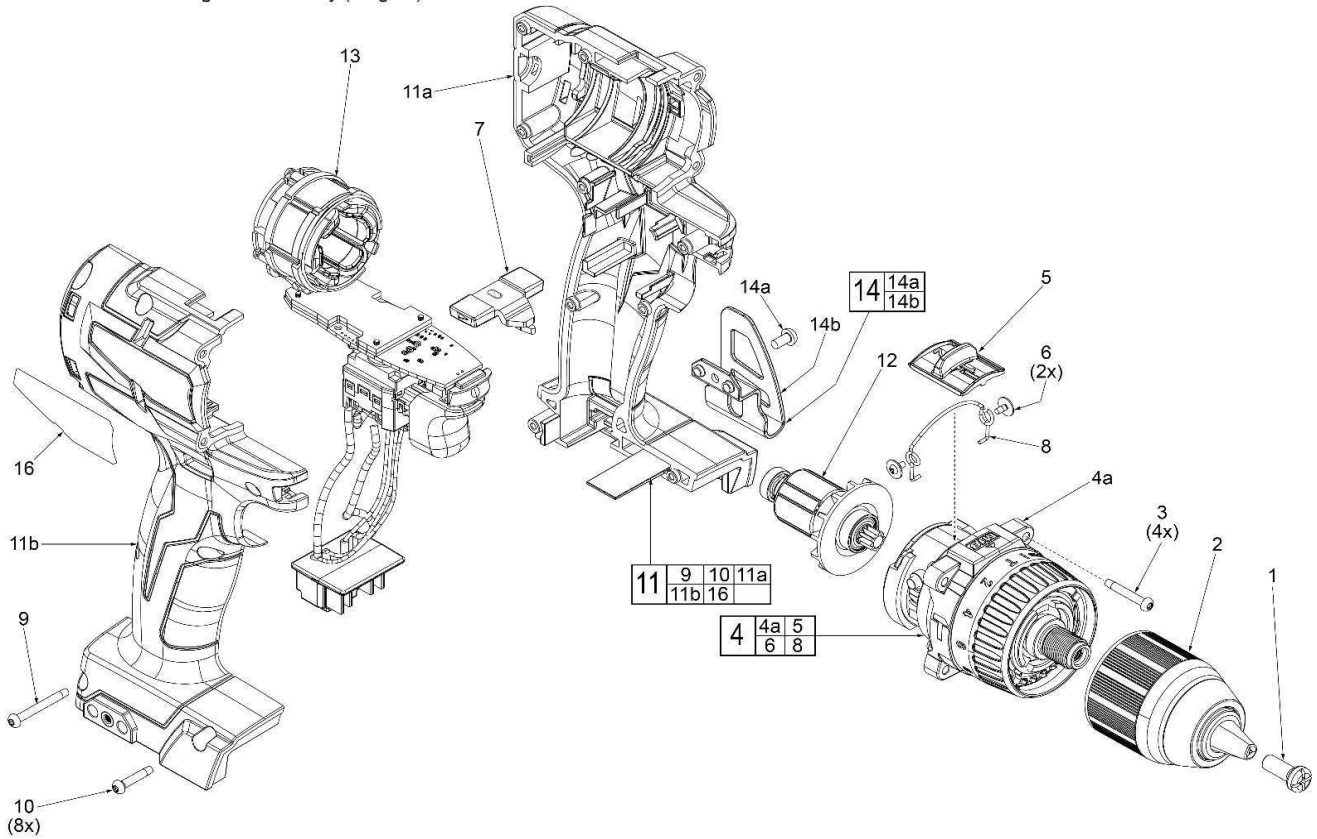
Starting Serial Number:

VERSION A - B2019

00 0

EXAMPLE:

Component Parts (Small #) Are Included When Ordering The Assembly (Large #).



SCREW TORQUE SPECIFICATIONS

FIG.	PART NO.	WHERE USED	SEAT TORQUE	
			(KG/CM)	(Nm)
1	05-88-0202	Gearbox Spindle	104-115	10.2-11.2
2	42-66-2801	Gearbox Spindle	288-345	28.3-33.8
3	06-82-7336	Gearbox	9-11	0.8-1.0
6	05-81-0542	Gearbox	Lightly hand tighten	
9	06-82-5315	Right Housing Halve	9-11	0.8-1.0
10	06-82-6351	Right Housing Halve	9-11	0.8-1.0
14a	06-82-2500	Belt Clip	12-16	1.1-1.4





M18 CBLPD

SERVICE PARTS LIST

TTI Model Number: 018 306 015

M18™ BRUSHLESS PERCUSSION DRILL

Bulletin Date:

Feb-20

Starting Serial Number:

VERSION A - B2019

ITEM	PART NUMBER	PART DESCRIPTION	QTY (PCS)
1	660134011	CHUCK SCREW	1
2	208305005	1/2" KEYLESS CHUCK	1
3	660230009	M4 X 20MM SCREW	4
4	208306004	GEARBOX ASSEMBLY	1
4a	-	GEARBOX	1
5	360141002	SPEED SELECTOR SHUTTLE	1
6	661262001	M2.3 X4.5MM SCREW	2
7	534316001	FORWARD/REVERSE SHUTTLE	1
8	696135001	SPEED CHANGE LEVER	1
9	660951001	M3 X 26MM SCREW	1
10	662456001	M3 X 16MM SCREW	8
11	204305002	HOUSING ASSEMBLY	1
11a	-	LEFT HOUSING HALVE - SUPPORT	1
11b	-	RIGHT HOUSING HALVE - COVER	1
12	208305003	ROTOR ASSEMBLY	1
13	208305004	ELECTRONICS ASSEMBLY	1
14	204897001	BELT CLIP KIT	1
14a	660820001	6-32 X 7MM SCREW	1
14b	-	BELT CLIP	1
15	204305003	BLOW MOLDED CARRYING CASE	1
16	940946980	SERVICE NAMEPLATE	1



M18 CBLPD

SERVICE INSTRUCTION

TTI Model Number: 018 306 015

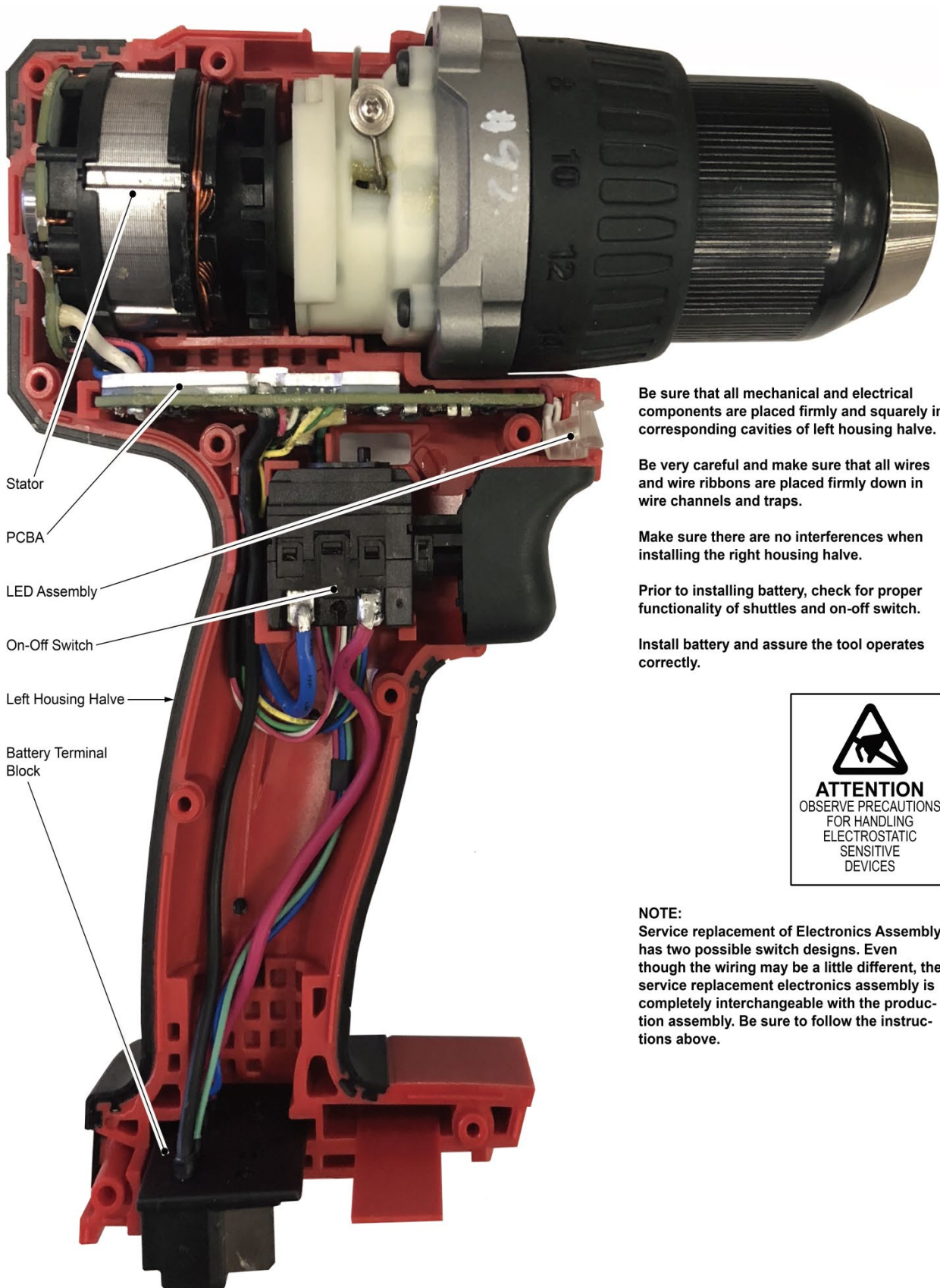
M18™ BRUSHLESS PERCUSSION DRILL

Bulletin Date:

Feb-20

Starting Serial Number:

VERSION A - B2019



Stator

PCBA

LED Assembly

On-Off Switch

Left Housing Halve

Battery Terminal Block

Be sure that all mechanical and electrical components are placed firmly and squarely in corresponding cavities of left housing halve.

Be very careful and make sure that all wires and wire ribbons are placed firmly down in wire channels and traps.

Make sure there are no interferences when installing the right housing halve.

Prior to installing battery, check for proper functionality of shuttles and on-off switch.

Install battery and assure the tool operates correctly.



NOTE:

Service replacement of Electronics Assembly has two possible switch designs. Even though the wiring may be a little different, the service replacement electronics assembly is completely interchangeable with the production assembly. Be sure to follow the instructions above.