



M18 BRAIW

SERVICE PARTS DIAGRAM

TTI Model Number: 018 117 010

M18™ COMPACT RIGHT ANGLE IMPACT WRENCH

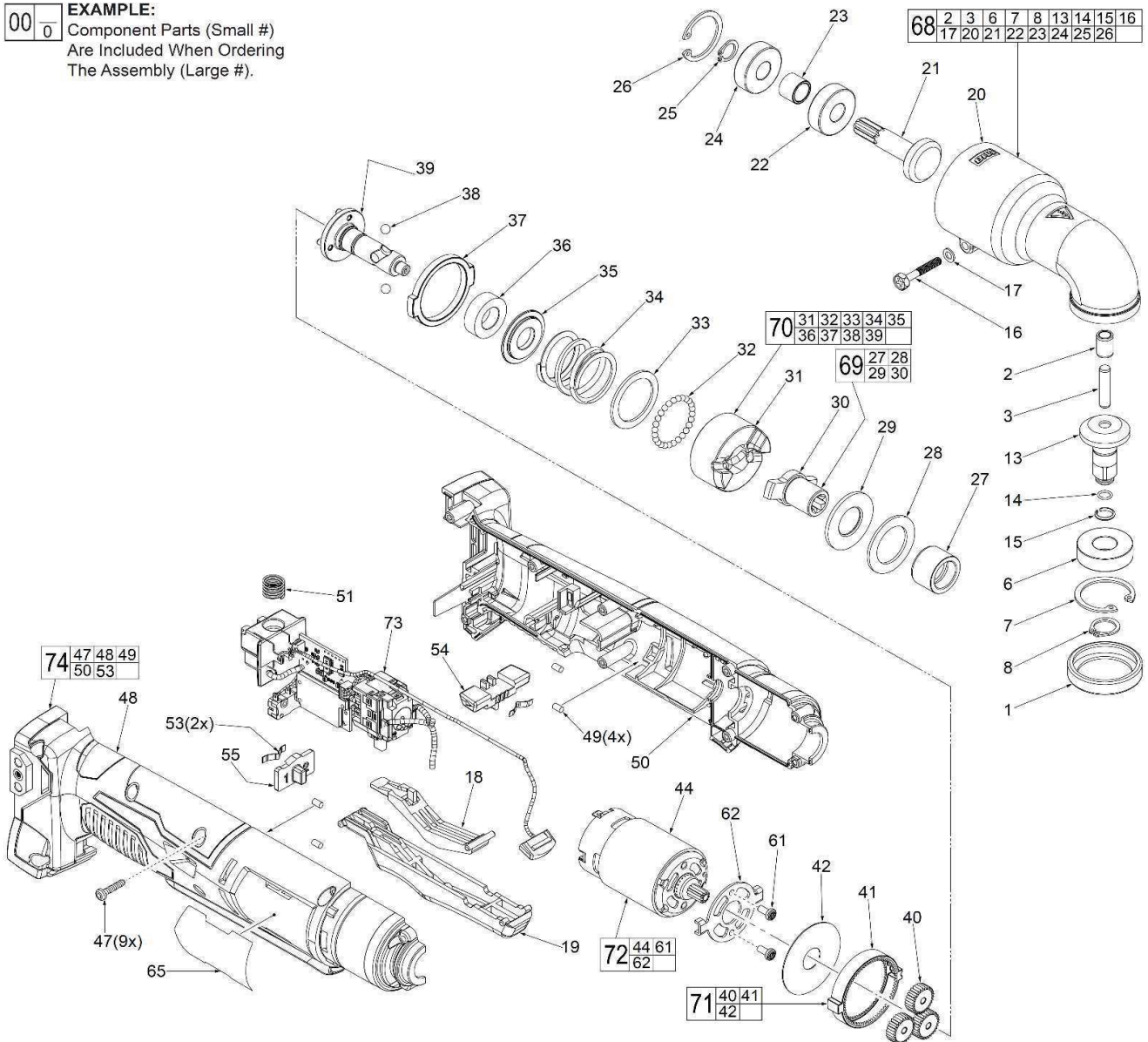
Bulletin Date:

Apr-20

Starting Serial Number:

VERSION A - J2015

EXAMPLE:
Component Parts (Small #)
Are Included When Ordering
The Assembly (Large #).



1200



57

	<h1>M18 BRAIW</h1> <p>SERVICE PARTS LIST</p>	Bulletin Date: <h2>Apr-20</h2>
	TTI Model Number: 018 117 010	Starting Serial Number:
	M18™ COMPACT RIGHT ANGLE IMPACT WRENCH	VERSION A - J2015

ITEM	PART NUMBER	PART DESCRIPTION	QTY (PCS)
1	563437001	RUBBER BUMPER RING	1
2	694027001	BUSHING	1
3	673252002	PIN	1
6	681856001	BALL BEARING	1
7	690777001	RETAINING RING	1
8	694050001	RETAINING RING	1
13	612280001	3/8" SQUARE BEVEL GEAR	1
14	562980002	O-RING	1
15	693518002	FRICTION RING	1
16	662032001	M4 X 1" SCREW	1
17	680866003	SPRING WASHER	1
18	527271001	MULTIPLIER	1
19	527273001	PADDLE	1
20	642226001	GEARCASE	1
21	612302001	BEVEL PINION	1
22	681857001	BALL BEARING	1
23	694026001	SLEEVE	1
24	681855001	BALL BEARING	1
25	694070001	RETAINING RING	1
26	694002001	RETAINING RING	1
27	693171002	ANVIL BUSHING	1
28	635231001	WASHER	1
29	527172001	NYLON RING	1
30	621664001	ANVIL	1
31	694063001	HAMMER	1
32	670221001	3.0MM STEEL BALL	27
33	634290002	WASHER	1
34	694064001	HAMMER SPRING	1
35	694062001	STEP WASHER	1
36	680414001	BALL BEARING	1
37	612310001	SUPPORT RING	1
38	680015001	3/16" STEEL BALL	2
39	621665001	CAM SHAFT	1
40	612306001	PLANET GEAR	3
41	612305001	RING GEAR	1
42	635312001	PLANETARY GEAR WASHER	1
44	742097001	MOTOR WITH PINION	1
47	660570005	M13 X 14MM SCREW	9

	<h1>M18 BRAIW</h1> <p>SERVICE PARTS LIST</p>	Bulletin Date: <h2>Apr-20</h2>
	<p>TTI Model Number: 018 117 010</p>	<p>Starting Serial Number:</p>
	<p>M18™ COMPACT RIGHT ANGLE IMPACT WRENCH</p>	<p>VERSION A - J2015</p>

ITEM	PART NUMBER	PART DESCRIPTION	QTY (PCS)
48	-	HANDLE HALVE - RIGHT	1
49	562951001	RUBBER SLUG	4
50	-	HANDLE HALVE - LEFT	1
51	691093001	TERMINAL BLOCK SPRING	1
53	633852003	SPRING PLATE	2
54	527270001	FORWARD/REVERSE SHUTTLE	1
55	351614001	TWO SPEED SHUTTLE	1
57	301928017	BLOW MOLDED CARRYING CASE	1
61	660380009	M3 X 5MM SCREW	2
62	635454001	MOTOR MOUNT PLATE	1
65	941048055	SERVICE NAMEPLATE	1
68	203021004	3/8" SQUARE GEARCASE ASSEMBLY	1
69	203024002	ANVIL ASSEMBLY	1
70	203025002	HAMMER ASSEMBLY	1
71	203026002	PLANETARY GEAR ASSEMBLY	1
72	208027002	MOTOR SUB ASSEMBLY	1
73	203028002	ELECTRONICS ASSEMBLY	1
74	203079002	HANDLE HALVE ASSEMBLY	1
1200	-	TYPE Y GREASE 6 OZ. TUBE	1



M18 BRAIW

SERVICE INSTRUCTION

TTI Model Number: 018 117 010

M18™ COMPACT RIGHT ANGLE IMPACT WRENCH

Bulletin Date:

Apr-20

Starting Serial Number:

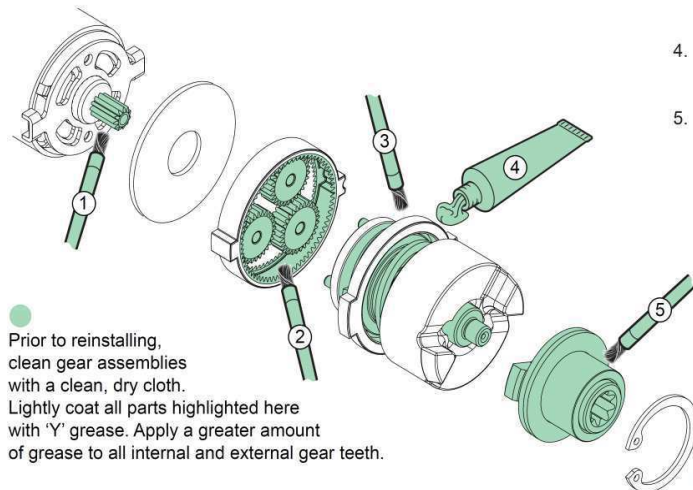
VERSION A - J2015

LUBRICATION NOTES:

Use Type 'Y' Grease, Item 1200 (170g).

Total amount approx. 7.8 grams (.275 ounces)

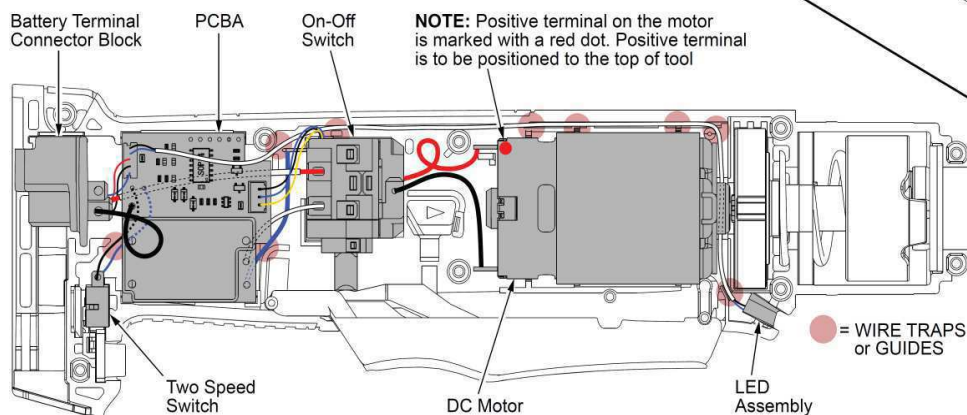
When servicing, remove 90-95% of the existing grease prior to installing Type 'Y'. Original grease maybe similar in color but not compatible with 'Y'.



1. Coat pinion gear of Motor Assembly #44 with grease.
2. Apply a heavy coating of grease to the inside gear teeth of the Ring Gear #41. Coat all sides of the three Planetary Gears #40, being sure that all gear teeth are completely covered.
3. **NOTE:** Hammer Assembly #70 comes completely assembled and lubricated. During shipping some grease may have rubbed off some of the external parts. Be sure that the back side and the planetary pins are coated.
4. **NOTE:** Disregard step #4. No action is required. This is shown for illustration purposes only to verify that there is a generous amount of grease in that area of the assembly.
5. Place a heavy coating of grease on Anvil #30, Nylon Ring #29, Washer #28 and Anvil Bushing #27. Assemble these components to comprise the Anvil Assembly #69. Be sure that the splined teeth inside the Anvil receive a heavy coating of grease. **NOTE:** Service Anvil Assembly #69 may or may not come lubricated.

NOTE: Disregard lubrication steps #6 and #7. The parts illustrated are components of the Service Gearcase Assembly. #67 and #68 come completely assembled and lubricated.

WIRING DIAGRAM



AS AN AID TO REASSEMBLY, TAKE NOTICE OF WIRE ROUTING AND POSITION IN WIRE GUIDES AND TRAPS WHILE DISMANTLING TOOL.

BE SURE THAT ALL COMPONENTS OF THE ELECTRONICS KIT ARE SEATED FIRMLY AND SQUARELY IN THE HOUSING RECESSES.

AVOID PINCHED WIRES, BE SURE THAT ALL WIRES AND SLEEVES ARE PRESSED COMPLETELY DOWN IN WIRE GUIDES AND TRAPS.

PRIOR TO INSTALLING THE HOUSING COVER ONTO THE HOUSING SUPPORT, BE SURE THAT THERE ARE NO INTERFERENCES.

