



# M18 BPD

SERVICE PARTS DIAGRAM

TTI Model Number: 018 070 024, 026, 043, 046, 049, 050

M18™ COMPACT PERCUSSION DRILL

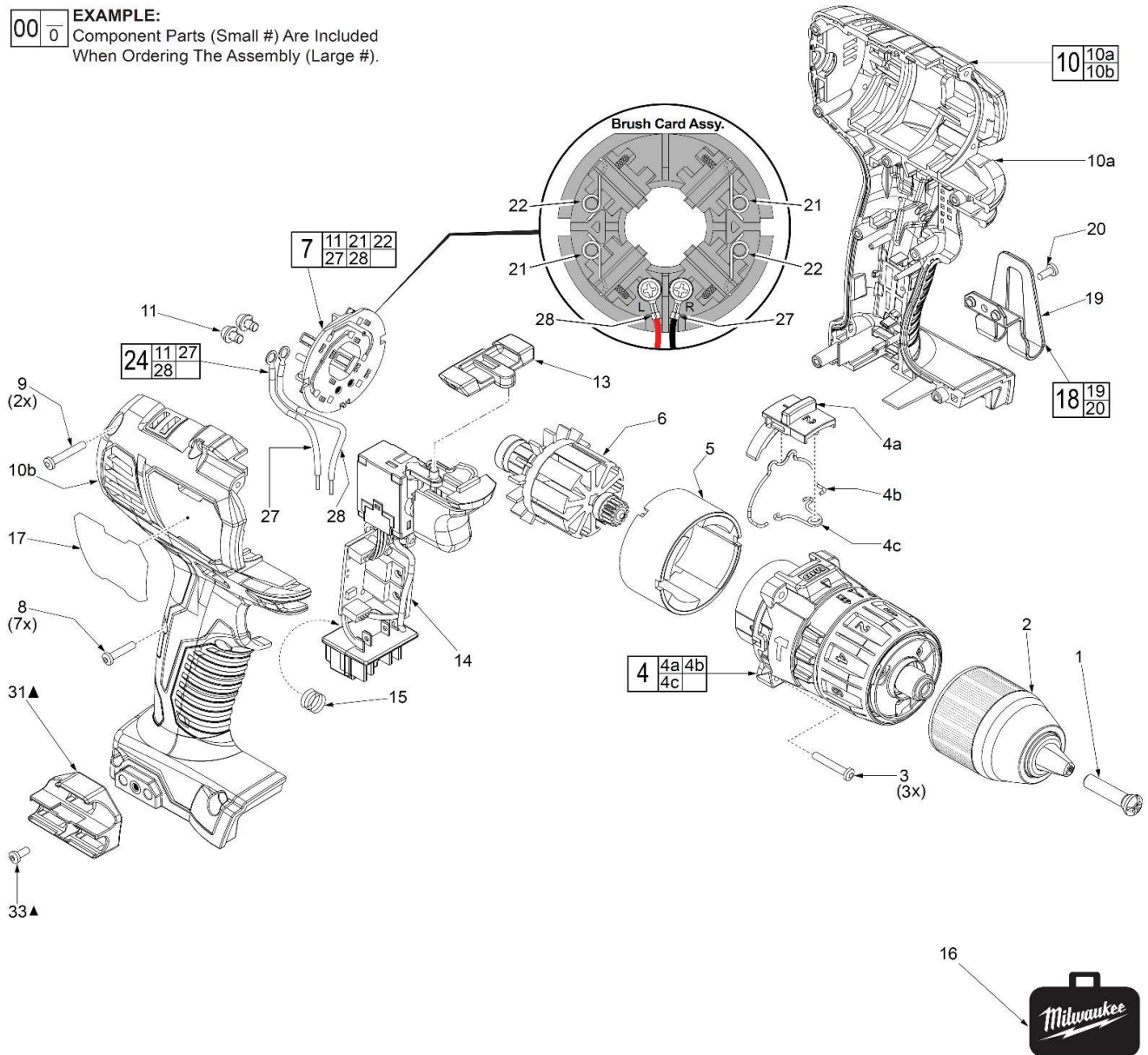
Bulletin Date:

Mar-20

Starting Serial Number:

VERSION A - C2014

**EXAMPLE:**  
Component Parts (Small #) Are Included  
When Ordering The Assembly (Large #).





# M18 BPD

SERVICE PARTS LIST

TTI Model Number: 018 070 024, 026, 043, 046, 049,050

**M18™ COMPACT PERCUSSION DRILL**

Bulletin Date:

**Mar-20**

Starting Serial Number:

**VERSION A - C2014**

| ITEM | PART NUMBER | PART DESCRIPTION   | QTY (PCS) |
|------|-------------|--|-----------|
| 1    | 660134002   | M6 X 27MM CHUCK SCREW  | 1         |
| 2    | 670842011   | KEYLESS 1/2" CHUCK (NEW)   | 1         |
| 2    | 670842003   | KEYLESS 1/2" CHUCK (OLD)   | 1         |
| 3    | 660228020   | M3 X 18MM SCREW  | 3         |
| 4    | 201070002   | GEAR BOX ASSEMBLY  | 1         |
| 4a   | 351522001   | SPEED SELECTOR SLIDE   | 1         |
| 4b   | 693612002   | SPEED CHANGE LEVER   | 1         |
| 4c   | 693613001   | TORSION SPRING   | 1         |
| 5    | 741496001   | FIELD  | 1         |
| 6    | 201070003   | ARMATURE   | 1         |
| 7    | 203907001   | BRUSH CARD ASSEMBLY  | 1         |
| 8    | 660851001   | M3 X 16MM SCREW  | 7         |
| 9    | 660230009   | M3 X 20MM SCREW  | 2         |
| 10   | 201070019   | HANDLE ASSEMBLY  | 1         |
| 10a  | -           | LEFT HANDLE HALVE  | 1         |
| 10b  | -           | RIGHT HANDLE HALVE   | 1         |
| 11   | 662308001   | M3 X 5MM SCREW   | 2         |
| 13   | 525521001   | FORWARD/REVERSE SHUTTLE  | 1         |
| 14   | 201070012   | ELECTRONICS ASSEMBLY   | 1         |
| 15   | 691093001   | TERMINAL BLOCK SPRING  | 1         |
| 16   | 302862026   | BLOW MOLDED CARRYING CASE<br>018070024, 026, 043, 046, 049,050 VERSION | 1         |
| 17   | 941045914   | SERVICE NAMEPLATE<br>018070024, 026, 043, 046, 049,050 VERSION         | 1         |
| 17   | 941038210   | SERVICE NAMEPLATE<br>018070031 VERSION                                 | 1         |
| 18   | 202132002   | BELT CLIP ASSEMBLY, OPTIONAL   | 1         |
| 19   | -           | BELT CLIP, OPTIONAL  | 1         |
| 20   | -           | BELT CLIP SCREW, OPTIONAL  | 2         |
| 21   | -           | BRUSH SPRING - RIGHT HAND  | 2         |
| 22   | -           | BRUSH SPRING - LEFT HAND   | 2         |
| 24   | 202741001   | LEADWIRE/SCREW/WASHER KIT  | 1         |
| 27   | -           | LEADWIRE ASSEMBLY - BLACK - RIGHT SIDE                                 | 1         |
| 28   | -           | LEADWIRE ASSEMBLY - RED - LEFT SIDE                                    | 1         |
| 31   | 516723001   | BIT HOLDER, OPTIONAL   | 1         |
| 33   | 660820001   | 6-32 X 5/16" SCREW, OPTIONAL   | 2         |



# M18 BPD

SERVICE INSTRUCTION

TTI Model Number: 018 070 024, 026, 043, 046, 049, 050

M18™ COMPACT PERCUSSION DRILL

Bulletin Date:

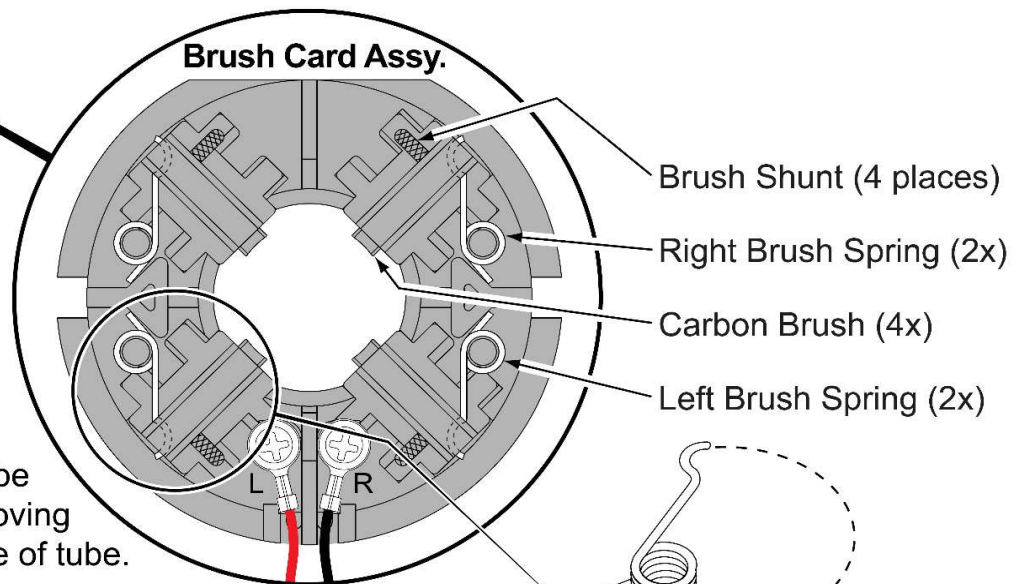
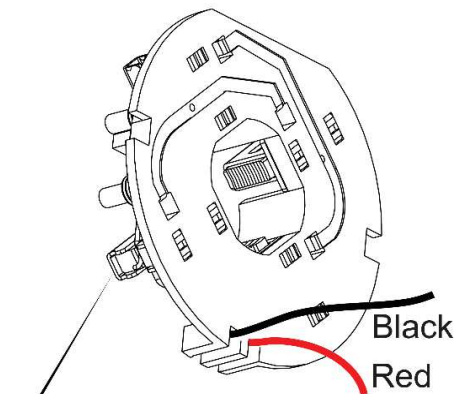
Mar-20

Starting Serial Number:

VERSION A - C2014

## INSTALLING BRUSH SPRINGS ON A BRUSH CARD ASSEMBLY WITH FOUR (4) BRUSHES

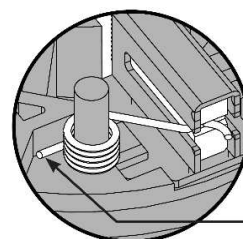
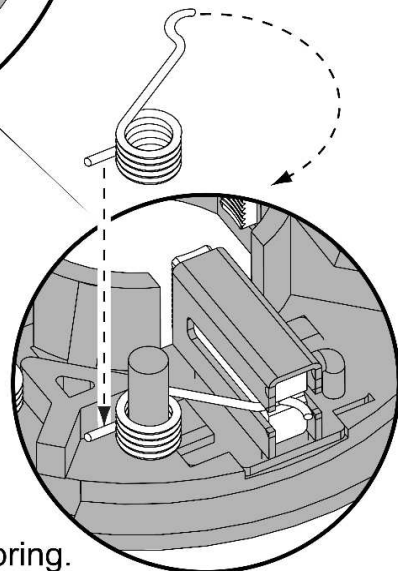
There are two Right Hand Brush Springs and two Left Hand Brush Springs. Follow the instructions below for proper installation.



Be sure carbon brush is in brush tube with brush shunt moving freely in side groove of tube.

Place brush spring over post with short leg positioned downward as shown. Be sure spring is completely down with short leg trapped against 'Y' shaped wall on brush card.

While holding spring in place, bring the long leg of spring over the brush tube and through rear opening of tube. Position rounded hook of spring in groove on back of carbon brush. Be sure to check for free movement between carbon brush, brush shunt and brush spring.



Correct

Short leg of spring to the bottom



# M18 BPD

SERVICE INSTRUCTION

TTI Model Number: 018 070 024, 026, 043, 046, 049,050

M18™ COMPACT PERCUSSION DRILL

Bulletin Date:

Mar-20

Starting Serial Number:

VERSION A - C2014

