

	M18 BP SERVICE PARTS LIST	Bulletin Date: Apr-20
	TTI Model Number: 018 133 010	Starting Serial Number:
	M18™ PLANER	VERSION A - A2020

ITEM	PART NUMBER	PART DESCRIPTION	QTY (PCS)
1	660031017	M3.5 X 15MM SCREW	6
2	528568001	DUST ADAPTER	2
3	660998001	6-19 X 11/16" SCREW	9
4	-	LEFT HANDLE HALVE - SUPPORT	1
5	660031015	M3 X 8MM SCREW	3
6	351577001	PULLEY COVER	1
7	528573001	SCROLL COVER	1
8	563615002	BELT (NOT SHOWN)	1
9	612617004	PULLEY - DRIVEN	1
10	612617003	PULLEY - DRIVER	1
11	694736001	BUSHING	1
12	661129006	8-16 X 1" SCREW	4
13	661420001	M4 X 14MM SCREW	3
14	642404001	SIDE PLATE	1
15	680070005	BALL BEARING	1
16	660302010	10-24 X 0.75" SCREW	6
17	636524001	BLADE CLAMP	2
18	694737001	CUTTING BLADE	2
19	307163005	CUTTING HEAD	1
21	672029001	SPRING	1
22	528576001	SWITCH LOCK-OUT	1
23	760245005	ON-OFF SWITCH	1
24	-	BATTERY CONNECTOR BLOCK ASSEMBLY	1
25	280085089	PCBA	1
26	681163001	BALL BEARING	1
27	742157001	SERVICE ARMATURE	1
28	902206001	ARMATURE SPACER	1
29	902207002	WASHER	3
30	681286002	BALL BEARING	1
31	903085001	FAN BAFFLE	1
32	528575001	MOTOR MOUNT	1
33	660211016	M3 X 12MM SCREW	3
34	741555002	FIELD	1
35	290586007	BRUSH CARD ASSEMBLY	1
36	660851001	M3 X 16MM SCREW	4
37	528582001	TOP AIR FLOW	1

	<div> M18 BP SERVICE PARTS LIST TTI Model Number: 018 133 010 M18™ PLANER </div>	Bulletin Date: Apr-20 Starting Serial Number: VERSION A - A2020
---	---	--

ITEM	PART NUMBER	PART DESCRIPTION	QTY (PCS)
38	307354001	FRONT SHOE ASSEMBLY	1
39	672605001	SPRING	1
40	673024001	CLUTCH CLICK PIN	1
41	671892001	PIN	1
42	694504001	COMPRESSION SPRING	1
43	351571002	ADJUSTMENT COLLAR	1
44	662188001	HEX NUT	1
45	528572001	ADJUSTMENT CAP	1
46	528581001	BOTTOM AIR FLOW	1
48	694505001	SPRING	1
49	621788001	PIN	1
50	528570001	KICKSTAND	1
51	-	RIGHT HANDLE HALVE - COVER	1
52	563758001	O-RING	1
53	694738003	1/8" HEX KEY	1
54	528567001	DUST FLAP KNOB	1
55	528566001	DUST FLAP	1
56	673371001	FLAP KNOB PIN	1
57	691093001	SPRING	1
62	203133006	BEVEL EDGE GUIDE ASSEMBLY	1
62a	528578001	ATTACHMENT KNOB	1
62b	560831001	RING	1
62c	528579001	WIDTH ADJUSTMENT KNOB	1
62d	691992001	WASHER	1
62e	636359001	ADJUSTMENT PLATE	1
62f	660142008	M6 X 12MM BOLT	1
62g	528580001	BEVEL ADJUSTMENT KNOB	2
62h	632831001	WASHER	2
62j	694824001	BEVEL ADJUSTMENT BOLT	2
62k	307740001	EDGE GUIDE PLATE ASSEMBLY	1
63	694506001	DETENT SPRING	1
64	941049909	RATING LABEL	1
65	203133007	DUST BAG (NOT SHOWN)	1
66	528569001	DUST ADAPTER EMEA VERSION(NOT SHOWN)	1
70	203133016	ADJUSTMENT KNOB ASSEMBLY	1
71	-	HOUSING ASSEMBLY	1

	M18 BP SERVICE PARTS LIST	Bulletin Date: Apr-20
	TTI Model Number: 018 133 010 M18™ PLANER	Starting Serial Number: VERSION A - A2020

ITEM	PART NUMBER	PART DESCRIPTION	QTY (PCS)
72	203133009	REAR SHOE ASSEMBLY WITH NEEDLE BEARING	1
73	203133010	ELECTRONICS ASSEMBLY	1
74	302907005	CARRYING CASE	1
76	203133005	CUTTING HEAD ASSEMBLY	1
2000	61-10-0096	PULLEY SERVICE FIXTURE	1
2001	61-10-0098	REPLACEMENT PIN	1
2002	61-10-0092	CUTTING HEAD ASSEMBLY SERVICE FIXTURE	1
2003	61-10-0094	FRONT SHOES DEPTH SERVICE FIXTURE	1



M18 BP

SERVICE INSTRUCTION

TTI Model Number: 018 133 010

M18™ PLANER

Bulletin Date:

Apr-20

Starting Serial Number:

VERSION A - A2020

Removing and Installing the Drive Belt

Driver Pulley (10)
Teeth set on a slightly smaller
OD than the Driven Pulley

Driven Pulley (9)
Teeth set on a slightly larger
OD than the Driver Pulley

Belt (8)
563615002

Pulley Cover (6)

When replacing belt (8), use the recommended replacement belt only. Order 563615002

- Always **REMOVE** the **BATTERY** before performing any service or maintenance.
- Remove the three M3 pulley cover screws (5) with a T-10 screwdriver.
- Remove the pulley cover (6).
- With both hands, work the belt off of larger driven pulley (9) by turning the belt in the direction shown while pulling the belt upward and outward. Continue working the belt upward until it is off the larger pulley. Remove belt over the lip of the smaller driver pulley (10).
- Install new belt by placing belt onto the driver pulley (10), being sure that belt is completely on the pulley, behind the front lip. Place the other end of the belt onto top of driven pulley (9). While turning the belt, push and work it onto the larger pulley. Continue working the belt downward onto the pulley until it is in place.
- Replace the pulley cover (6) and secure with the three screws (5). **NOTE:** Do not over-tighten screws.

SERVICE FIXTURES:

61-10-0092

Cutting Head Assembly Service Fixture
(For removing cutting head pulley)

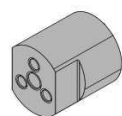
61-10-0094

Front Shoe Depth Service Fixture

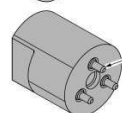
Rear Shoe Side

0.2mm Rise

Front Shoe Side



61-10-0096
Pulley Service Fixture



61-10-0098
Replacement Pin
(One each)

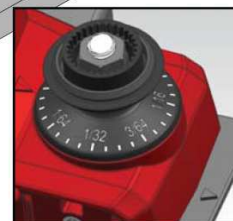
Motor side pulley installation torque:
40 kgf-cm (3.92Nm)
Left hand thread

Cutting head side pulley installation
torque: 60 kgf-cm (5.89Nm)
Right hand thread

Place tool in the service fixture with the rear shoe level on its fixture surface. Front shoe should then be set so that it is level on its fixture surface when the adjustment collar is set to '0' depth (0.2mm below the rear shoe surface).

Front shoe depth can be set with a standard 16mm socket and wrench.

NOTE: A 0.2mm shim under the rear shoe can be used in place of the service fixture.





M18 BP

SERVICE INSTRUCTION

TTI Model Number: 018 133 010

M18™ PLANER

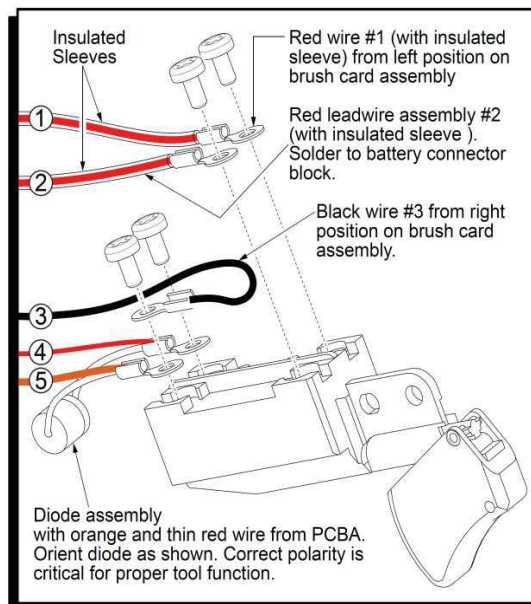
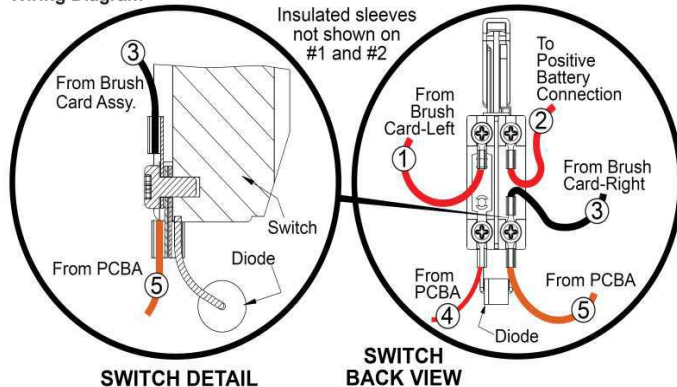
Bulletin Date:

Apr-20

Starting Serial Number:

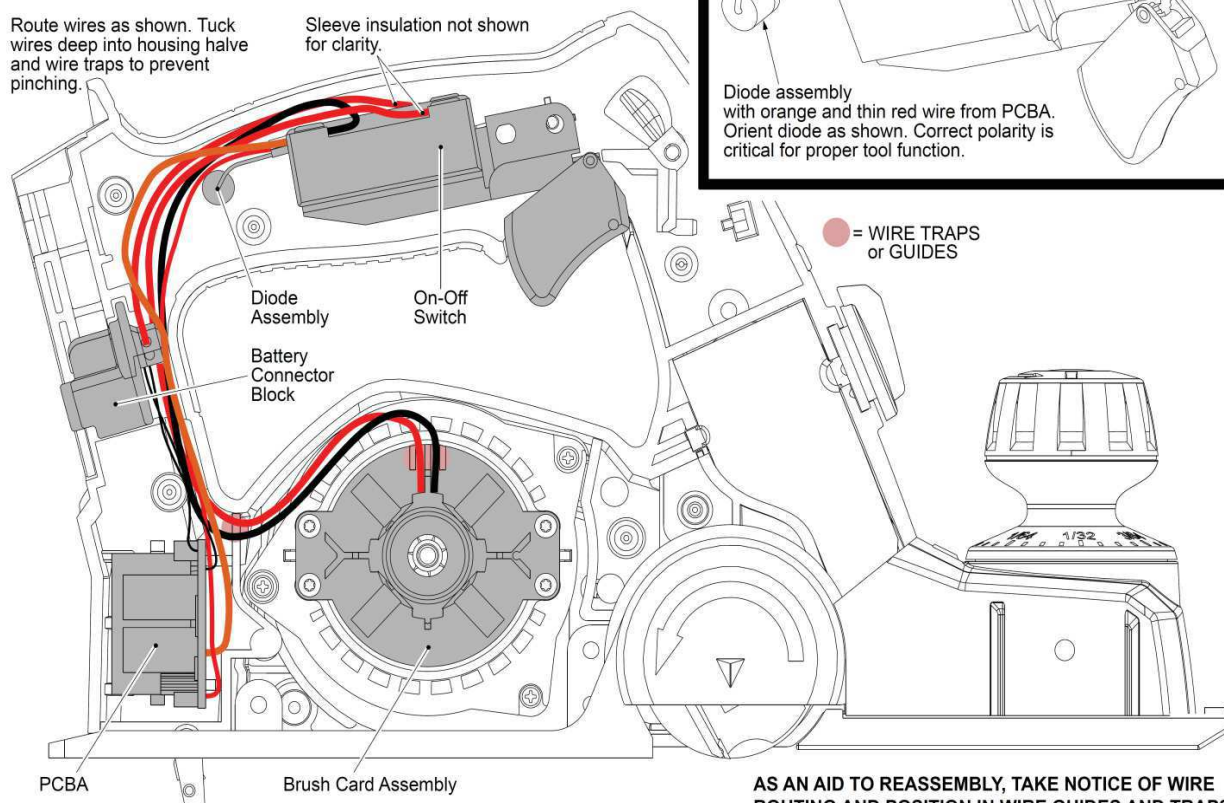
VERSION A - A2020

Wiring Diagram



Route wires as shown. Tuck wires deep into housing half and wire traps to prevent pinching.

Sleeve insulation not shown for clarity.



AS AN AID TO REASSEMBLY, TAKE NOTICE OF WIRE ROUTING AND POSITION IN WIRE GUIDES AND TRAPS WHILE DISMANTLING TOOL.

BE CAREFUL AND AVOID PINCHING WIRES BETWEEN HANDLE HALVES WHEN ASSEMBLING.

SCREW TORQUE SPECIFICATIONS

FIG.	PART NO.	WHERE USED	SEAT TORQUE	
			(KG/CM)	(Nm)
1	660031017	Rear Shoe Assembly	6-10	0.57-0.96
1	660031017	Bottom Air Flow	6-10	0.57-0.96
1	660031017	Top Air Flow	6-10	0.57-0.96
1	660031017	Dust Adapter (Both Sides)	6-10	0.57-0.96
3	660998001	Right Handle Half - Cover	11-17	1.07-1.64
5	660031015	Pulley Cover	4-8	0.40-0.79
12	661129006	Side Plate to Rear Shoe	17-28	1.64-2.71
13	661420001	Side Plate to Left Handle Half	11-16	1.07-1.58
16	660302010	Blade Clamp	30-40	2.94-3.96
23	760245005	On-Off Switch	8-12	0.79-1.19
33	660211016	Motor Mount	8-12	0.79-1.19
36	660851001	Brush Card Assembly	4-8	0.40-0.79