



M18 BMT

SERVICE PARTS DIAGRAM

TTI Model Number: 018 106 018

M18™ COMPACT MULTI TOOL

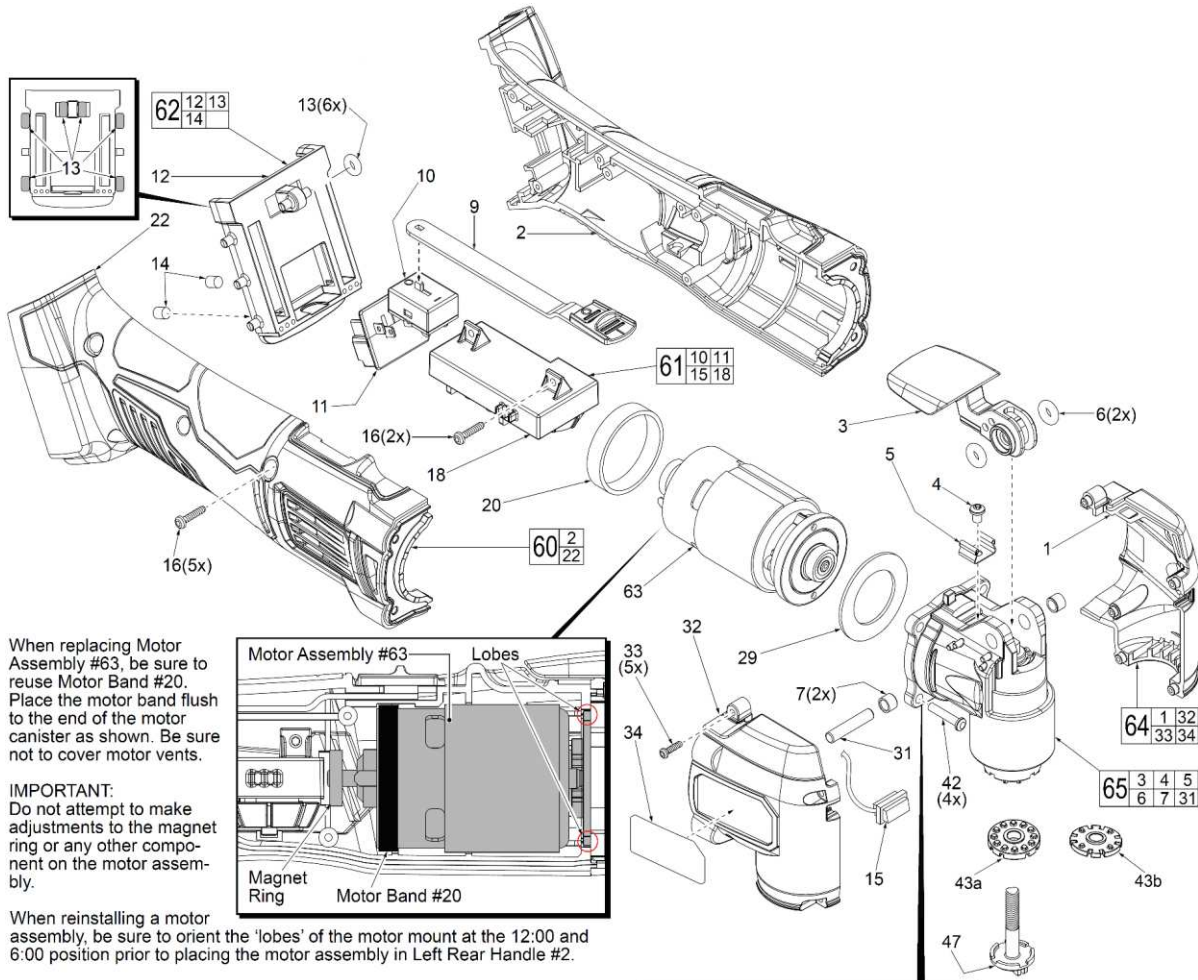
Bulletin Date:

Apr-21

Starting Serial Number:

VERSION A - G2017

EXAMPLE:
 Component Parts (Small #) Are Included
 When Ordering The Assembly (Large #).



When replacing Motor Assembly #63, be sure to reuse Motor Band #20. Place the motor band flush to the end of the motor canister as shown. Be sure not to cover motor vents.

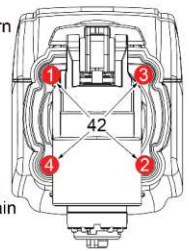
IMPORTANT:
 Do not attempt to make adjustments to the magnet ring or any other component on the motor assembly.

When reinstalling a motor assembly, be sure to orient the 'lobes' of the motor mount at the 12:00 and 6:00 position prior to placing the motor assembly in Left Rear Handle #2.

Alternate the tightening pattern for gearcase screws #42 as shown.

Seat torque to be 19.5 in/lbs (21.5 kg/cm)

Order is 1,2,3,4 than 1,2,3,4 again





M18 BMT

SERVICE PARTS LIST

TTI Model Number: 018 106 018

M18™ COMPACT MULTI TOOL

Bulletin Date:

Apr-21

Starting Serial Number:

VERSION A - G2017

ITEM	PART NUMBER	PART DESCRIPTION	QTY (PCS)
1	-	FRONT HOUSING - LEFT	1
2	-	REAR HANDLE - LEFT	1
3	351230001	QUICK RELEASE LEVER	1
4	660165016	M4 X 8MM SCREW	1
5	634890001	CLIP	1
6	563237001	RUBBER O-RING	2
7	526251001	NYLON BUSHING	2
9	351229001	SWITCH SLIDE	1
10	-	ON-OFF SWITCH	1
11	-	TERMINAL BLOCK	1
12	526231001	TERMINAL BLOCK PLATE	1
13	563261001	RUBBER ISOLATORS	6
14	560075002	SILICONE SLUG	2
15	-	LED ASSEMBLY	1
16	660570005	M3 X 14MM SCREW	7
18	-	PCBA	1
20	563262001	RUBBER MOTOR BAND	1
22	-	REAR HANDLE - RIGHT	1
29	634923001	WASHER	1
31	673200001	5.0 X 26MM PIN	1
32	-	FRONT HOUSING - RIGHT	1
33	661047001	M2.6 X 14MM SCREW	5
34	941048291	SERVICE NAMEPLATE	1
42	661921001	M4 X 20MM SCREW	4
43a	612235001	SUPER CUT ADAPTER	1
43b	611273006	ADAPTOR	1
47	694150001	BLADE/BACKING PAD SCREW	1
60	202712002	REAR HANDLE ASSEMBLY	1
61	202713001	SWITCH/ELECTRONICS ASSEMBLY	1
62	202714001	TERMINAL BLOCK PLATE ASSEMBLY	1
63	202715004	MOTOR ASSEMBLY	1
64	202716003	FRONT HOUSING ASSEMBLY	1
65	202717001	GEARCASE ASSEMBLY	1
1200	-	TYPE J GREASE	1



M18 BMT

SERVICE INSTRUCTION

TTI Model Number: 018 106 018

M18™ COMPACT MULTI TOOL

Bulletin Date:

Apr-21

Starting Serial Number:

VERSION A - G2017

SCREW TORQUE SPECIFICATIONS

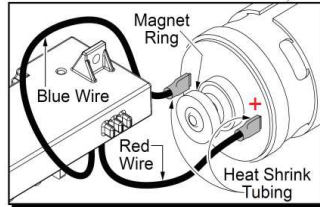
FIG.	PART NO.	WHERE USED	SEAT TORQUE	
			(KG/CM)	(Nm)
4	660165016	Gearcase (Top) / Clip	13±2	1.3±0.17
16	660570005	Rear Handle - Right	10±2	0.96±0.17
16	660570005	PCBA	10±2	0.96±0.17
33	661047001	Front Housing - Right	7±1	0.68±0.11
42	661921001	Gearcase (Front)	21.5±2	2.09±0.17

It is recommended to hand tighten Rear Handle Screws #16, PCBA Screws #16 and Front Housing Screws #33 to prevent over tightening. Exercise caution when tightening screws if a cordless driver drill is used.

NOTE:

Route the blue wire (from the PCBA to the negative motor terminal) behind the PCBA screw lobe. Be sure to tuck the blue wire down into the rear handle as much as possible, away from the magnet ring of the motor assembly.

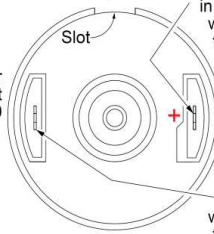
It is recommended to use heat shrink tubing over the soldered wires / motor terminals as shown.



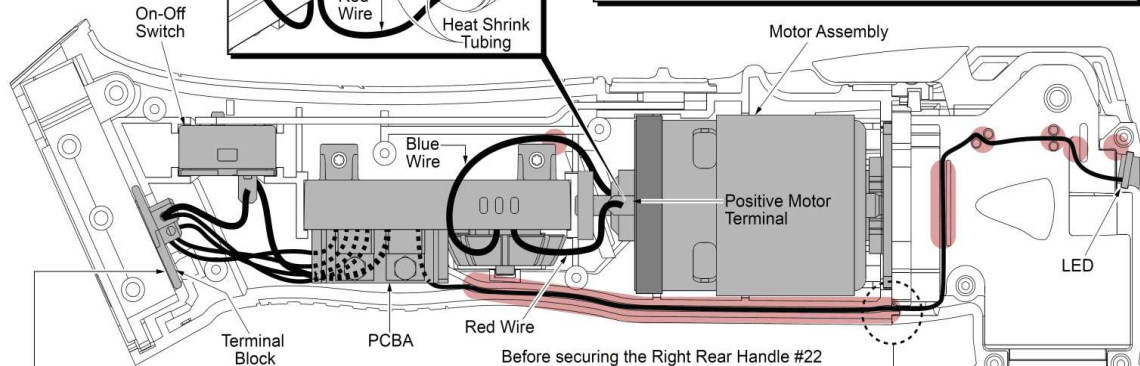
Proper orientation of the Motor Assembly #63 is with the slot in the motor canister to the top at the 12:00 position.

This rear view of the motor assembly is shown without the rubber motor band #20 in place so the slot at the top could be seen.

Positive motor terminal is surrounded by a plastic ledging with a step in it. Connect red wire from PCBA to this terminal.



The plastic ledging around the negative terminal has no step. Connect blue wire from PCBA to this terminal.



NOTE:

Terminal Block #11 must be installed at the same time into Terminal Block Plate #12.

Before securing the Right Rear Handle #22 and the Right Front Housing #32, be sure that the LED wires are tucked completely down in the wire trap. Be careful not to pinch the LED wires in the area where the rear handles, front housings and gearcase meet.

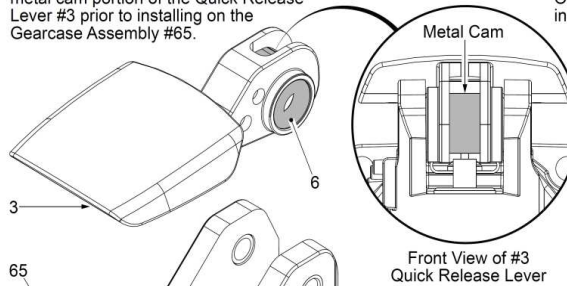
● = WIRE TRAPS or GUIDES

LUBRICATION NOTES:
Use Type 'J' Grease, Item 1200

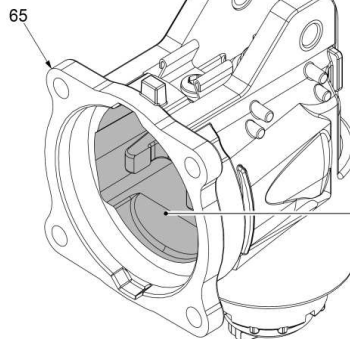
When servicing, remove 90-95% of the existing grease prior to installing Type 'J'. Original grease may be similar in color but not compatible with 'J'.

Place a light coating of grease on the metal cam portion of the Quick Release Lever #3 prior to installing on the Gearcase Assembly #65.

Place a light coating of grease on the O-Rings #6 (both sides) prior to installing in the Quick Release Lever #3.



Front View of #3 Quick Release Lever



Place a light coating of grease on Metal Pin #31 prior to installing in the Gearcase Assembly #65.

31

Fill the inside cavity of Gearcase Assembly #65 with approximately .35oz. (10g) of grease.



M18 BMT

SERVICE INSTRUCTION

TTI Model Number: 018 106 018

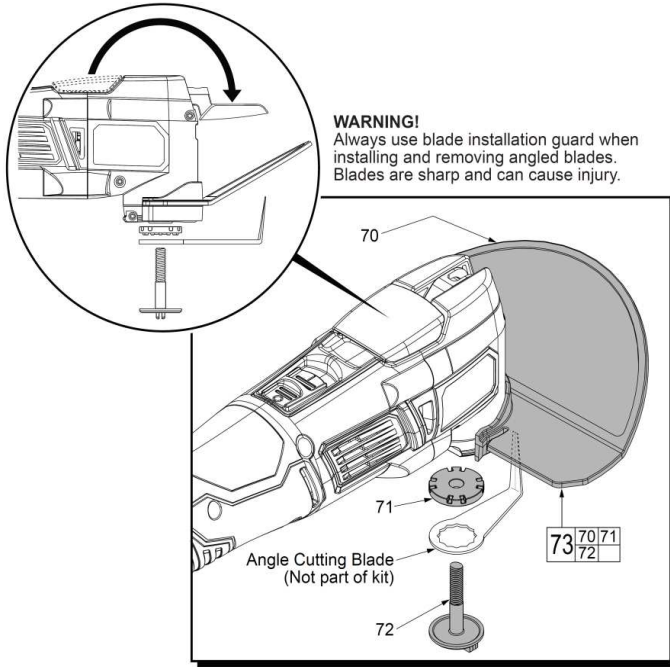
M18™ COMPACT MULTI TOOL

Bulletin Date:

Apr-21

Starting Serial Number:

VERSION A - G2017



WARNING!
Always use blade installation guard when installing and removing angled blades. Blades are sharp and can cause injury.

Procedure to change cutting accessories:

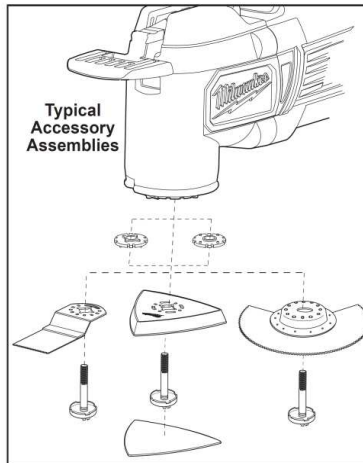
- 1). Remove the battery pack.
- 2). Snap the blade installation guard #70 over the neck of the tool, as shown.
- 3). Lift the quick release lever #3 and push it firmly forward over the detent.
- 4). Place the tool upside down on a flat surface.
- 5). Unscrew the accessory bolt #72.
- 6). Remove any accessories and adapter #71.

ANGLE BLADE GUARD KIT (Not a component of tool, sold separately)
No. 14-32-0300

FIG.	PART NO.	DESCRIPTION OF PART	NO. REQ.
	70	Angle Blade Guard with <u>Warning Label</u>	1
	71	Angle Blade Adapter	1
	72	Angle Blade Screw	1
	73	Angle Blade Installation Guard Kit	1

Changing Accessories

1. Remove the battery pack.
2. Lift the quick release lever and push it firmly forward over the detent.
3. Place the tool upside down on a flat surface.
4. Unscrew the accessory bolt.
5. Remove any accessories and adapter.
6. Clean bolt, flange, adapter and accessories of all dirt and debris.
7. Place the adapter (if necessary), accessory and bolt onto the tool. Determine the need for an adapter by using the chart. Hand tighten securely.
8. Press the quick release lever back into place.



Accessory Arbor Type	Use adapter with this side facing accessory
	adapter not needed
	adapter not needed
	adapter not needed
	adapter not needed
	* Adapter kit available as an accessory. Always use installation guard and accessory bolt provided with the kit when using these accessories.

