



# M18 BLPD

SERVICE PARTS DIAGRAM

TTI Model Number: 018 138 014, 015, 018, 019

M18 COMPACT BRUSHLESS PERCUSSION DRILL

Bulletin Date:

Mar-20

Starting Serial Number:

VERSION A - K2015

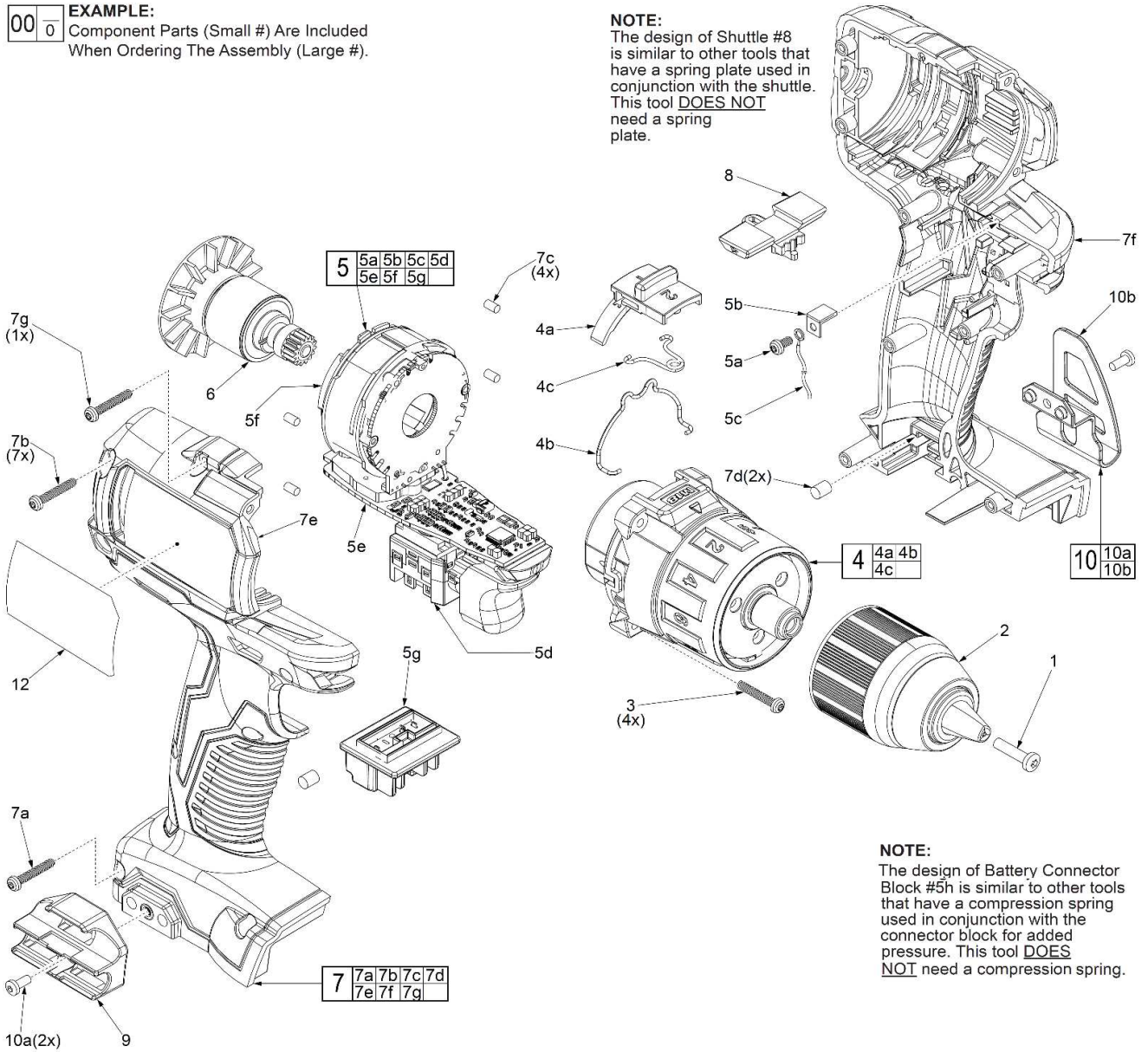
00 0

**EXAMPLE:**

Component Parts (Small #) Are Included  
When Ordering The Assembly (Large #).

**NOTE:**

The design of Shuttle #8  
is similar to other tools that  
have a spring plate used in  
conjunction with the shuttle.  
This tool **DOES NOT**  
need a spring  
plate.



**NOTE:**

The design of Battery Connector  
Block #5h is similar to other tools  
that have a compression spring  
used in conjunction with the  
connector block for added  
pressure. This tool **DOES**  
**NOT** need a compression spring.



# M18 BLPD

SERVICE PARTS LIST

TTI Model Number: 018 138 014, 015, 018, 019

M18 COMPACT BRUSHLESS PERCUSSION DRILL

Bulletin Date:

**Mar-20**

Starting Serial Number:

VERSION A - K2015

ITEM	PART NUMBER	PART DESCRIPTION	QTY (PCS)
1	660134002	CHUCK SCREW	1
2	670842004	CHUCK	1
3	661922001	M3 X 18MM SCREW	4
4	203138003	GEARBOX ASSEMBLY	1
4a	351522001	SPEED SELECTOR SLIDE	1
4b	693612002	SPEED CHANGE LEVER	1
4c	693613001	TORSION SPRING	1
5	203137008	ELECTRONICS ASSEMBLY	1
5a	660438002	M3 X 8MM SCREW	1
5b	636083001	HV CONTACT PLATE	1
5c	-	HV WIRE	1
5d	-	ON-OFF SWITCH	1
5e	-	PCBA	1
5f	-	STATOR	1
5g	-	BATTERY CONNECTOR BLOCK	1
6	203137004	ROTOR ASSEMBLY	1
7	203137010	HOUSING KIT	1
7a	660951001	M3 X 26MM SCREW	1
7b	660851001	M3 X 16MM SCREW	7
7c	562951001	RUBBER SLUG	4
7d	560075002	RUBBER SLUG	2
7e	-	HOUSING HALVE - RIGHT	1
7f	-	HOUSING HALVE - LEFT	1
7g	661922001	M3 X 18MM SCREW	1
8	527869001	FORWARD/REVERSE SHUTTLE	1
9	200624002	BIT HOLDER KIT (OPTIONAL)	1
10	202132002	BELT CLIP KIT (OPTIONAL)	1
10a	660820001	6-32 X 5/16" SCREW (OPTIONAL)	2
10b	-	BELT CLIP (OPTIONAL)	1
11	301696008	DYNACASE 018138014, 015 VERSION	1
11	302862021	DYNACASE 018138018, 019 VERSION	1
12	941046442	SERVICE NAMEPLATE	1



# M18 BLPD

SERVICE INSTRUCTION

TTI Model Number: 018 138 014, 015, 018, 019

M18 COMPACT BRUSHLESS PERCUSSION DRILL

Bulletin Date:

Mar-20

Starting Serial Number:

VERSION A - K2015

