



M12 IR

SERVICE PARTS DIAGRAM

TTI Model Number: 018 063 021, 023, 036, 038, 039, 049

M12 3/8" IMPACT RACHET

Bulletin Date:

Mar-21

Starting Serial Number:

VERSION A - C2013

EXAMPLE:
00 0 Component Parts (Small #)
Are Included When Ordering
The Assembly (Large #).

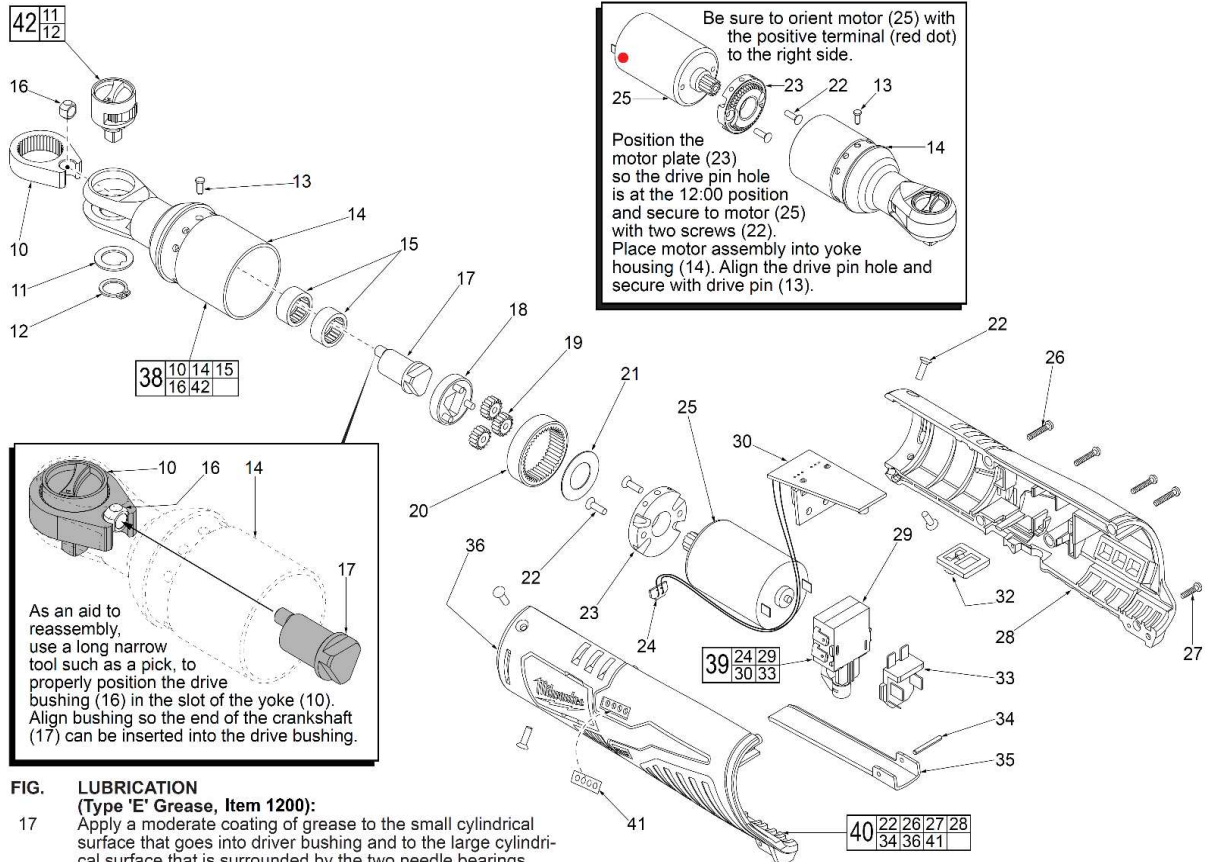


FIG. LUBRICATION

(Type 'E' Grease, Item 1200):

- 17 Apply a moderate coating of grease to the small cylindrical surface that goes into driver bushing and to the large cylindrical surface that is surrounded by the two needle bearings.
- 18 Apply a moderate coating of grease to the three axes of the carrier assembly prior to installing the planet gears.
- 20,25 Apply a heavy coating of grease to the inside diameter gear teeth of the ring gear and the teeth of the motor pinion.
- 21 Apply a light coat of grease to the surface of the washer.

FIG. NOTES

- 28,31 Prior to installing a new service nameplate, apply isopropyl alcohol to the handle cover with a clean, lint free applicator and allowed to dry.
- 34 Use a similar size tool or pin to remove the spring pin from the handle halves and switch paddle. When reinstalling pin, align the holes and carefully press or tap the pin in place.



	<h1>M12 IR</h1> <p>SERVICE PARTS LIST</p>	<p>Bulletin Date: Mar-21</p>
	<p>TTI Model Number: 018 063 021, 023, 036, 038, 039, 049</p>	<p>Starting Serial Number:</p>
	<p>M12 3/8" IMPACT RACHET</p>	<p>VERSION A - C2013</p>

ITEM	PART NUMBER	PART DESCRIPTION	QTY (PCS)
10	692897004	YOKE (NEW)	1
10	692897001	YOKE (OLD)	1
11	692922001	FRICTION PLATE	1
12	692914001	RETAINING RING	1
13	673021003	DRIVE PIN	1
14	693526001	YOKE HOUSING	1
15	681521001	NEEDLE BEARING	2
16	692912001	DRIVER BUSHING	1
17	621249002	CRANKSHAFT	1
18	611400001	CARRIER ASSEMBLY	1
19	611398001	PLANET GEAR	3
20	611399001	RING GEAR	1
21	633795001	WASHER	1
22	661487001	M3 X 10MM SCREW	4
23	611397001	MOTOR PLATE	1
24	-	LED ASSEMBLY (COMPONENT OF PCBA)	1
25	201931001	MOTOR ASSEMBLY	1
26	661047001	M2.6 X 14MM SCREW	4
27	661081001	M2.6 X 10MM SCREW	1
28	-	HANDLE COVER - RIGHT	1
29	-	SWITCH	1
30	-	PCB ASSEMBLY WITH LED	1
31	941122414	SERVICE NAMEPLATE (NOT SHOWN) (NEW) 018063021 KR, 023 CN, 036 , 038 KR, 039 ASIA VERSION	1
31	941048028	SERVICE NAMEPLATE (NOT SHOWN) (OLD) 018063021 KR, 023 CN, 036 , 038 KR, 039 ASIA VERSION	1
31	941050556	SERVICE NAMEPLATE (NOT SHOWN) 018063049 APJ VERSION	1
32	523027001	LOCKOUT SWITCH	1
33	-	BATTERY CONNECTOR	1
34	673021004	SPRING PIN	1
35	633822001	SWITCH PADDLE	1
36	-	HANDLE SUPPORT - LEFT	1
38	201933001	3/8" YOKE HOUSING ASSEMBLY	1
39	201930001	SWITCH ASSEMBLY	1
40	201929001	HANDLE KIT	1
41	-	FUEL GAUGE LABEL	1
42	304635002	3/8" ANVIL SERVICE KIT	1
43	902033021	CONTRACTORS BAG	1
1200	-	TYPE E GREASE	1



M12 IR

SERVICE INSTRUCTION

TTI Model Number: 018 063 021, 023, 036, 038, 039, 049

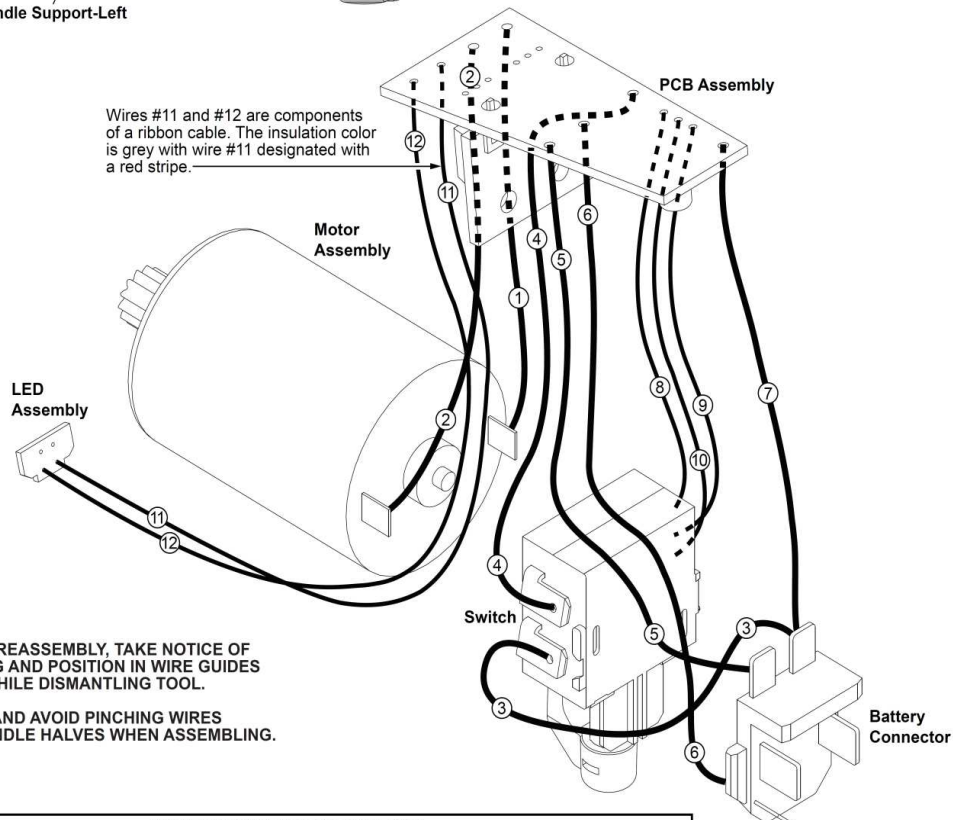
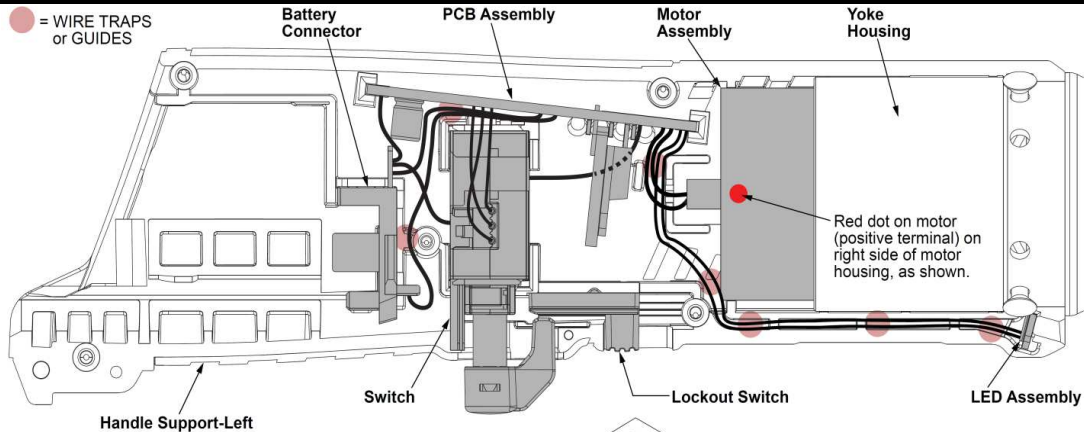
M12 3/8" IMPACT RACHET

Bulletin Date:

Mar-21

Starting Serial Number:

VERSION A - C2013



AS AN AID TO REASSEMBLY, TAKE NOTICE OF WIRE ROUTING AND POSITION IN WIRE GUIDES AND TRAPS WHILE DISMANTLING TOOL.

BE CAREFUL AND AVOID PINCHING WIRES BETWEEN HANDLE HALVES WHEN ASSEMBLING.

WIRING SPECIFICATIONS

Wire No.	Wire Color	Origin or Part No.	Gauge	Length	Terminals, Connectors and End Wire Preparation
1	Red	--	--	--	Component of the Switch Assembly.
2	White	--	--	--	Component of the Switch Assembly.
3	Red	--	--	--	Component of the Switch Assembly.
4	Black	--	--	--	Component of the Switch Assembly.
5	Black	--	--	--	Component of the Switch Assembly.
6	White	--	--	--	Component of the Switch Assembly.
7	Red	--	--	--	Component of the Switch Assembly.
8	Yellow	--	--	--	Component of the Switch Assembly.
9	Blue	--	--	--	Component of the Switch Assembly.
10	Black	--	--	--	Component of the Switch Assembly.
11	Grey w/ Red Stripe	--	--	--	Component of the Switch Assembly.
12	Grey	--	--	--	Component of the Switch Assembly.

BULK LEAD WIRE - BULLETIN 58-01-0003

NOTE:

All leads must be held to $\pm 1/16"$.
All lead lengths are before strip-

TERMINAL DESCRIPTION

Code	Part No.	Qty.

CONNECTOR DESCRIPTION

--	--	--