



# M12 FBS64

SERVICE PARTS DIAGRAM

TTI Model Number: 018 542 007

M12 FUEL™ COMPACT BANDSAW

Bulletin Date:

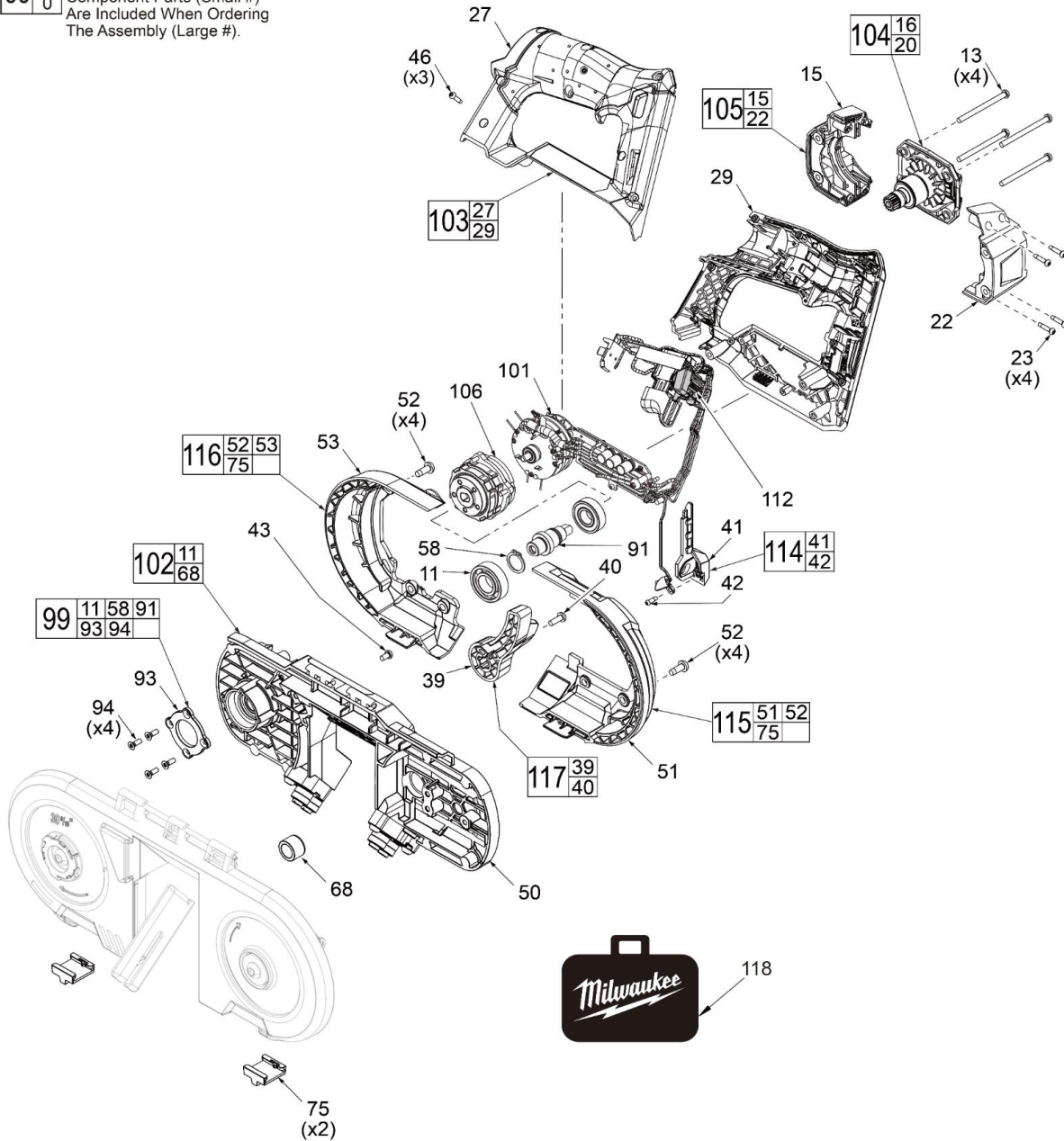
Feb-21

Starting Serial Number:

VERSION A -

00	0
----	---

**EXAMPLE:**  
Component Parts (Small #)  
Are Included When Ordering  
The Assembly (Large #).





# M12 FBS64

SERVICE PARTS DIAGRAM

TTI Model Number: 018 542 007

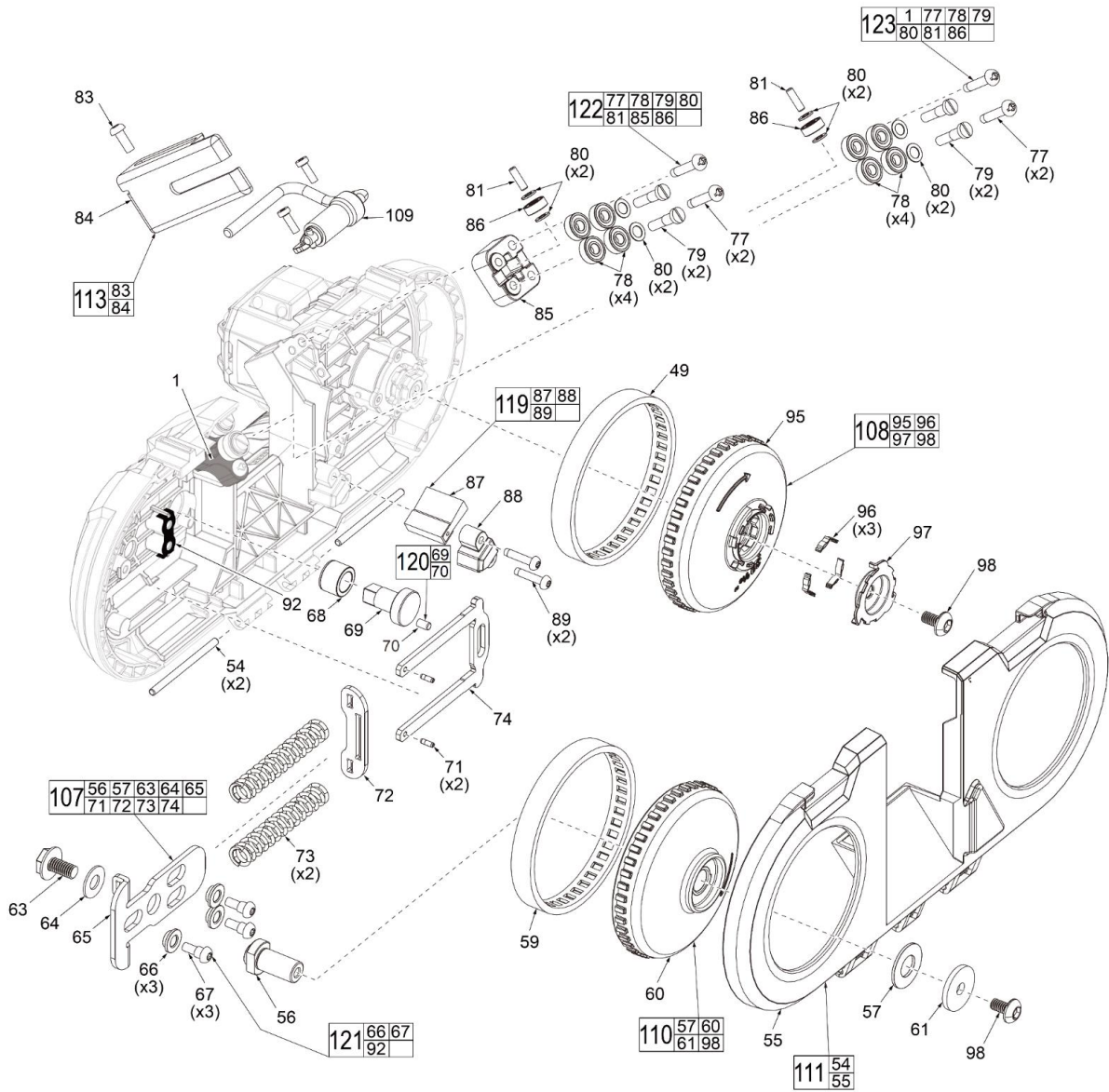
M12 FUEL™ COMPACT BANDSAW

Bulletin Date:

Feb-21

Starting Serial Number:

VERSION A -



Grease 1200



# M12 FBS64

SERVICE PARTS LIST

TTI Model Number: 018 542 007

M12 FUEL™ COMPACT BANDSAW

Bulletin Date:

**Feb-21**

Starting Serial Number:

VERSION A -

ITEM	PART NUMBER	PART DESCRIPTION	QTY (PCS)
1	641686001	FRONT ROLLER BLOCK	1
11	681122002	BALL BEARING	1
13	660414010	M SCREW M4x0.7 PH TORX T20	4
15	541123001	MOTOR HOUSING COVER	1
22	541122001	MOTOR HOUSING SUPPORT	1
23	660570005	ST SCREW	13
27	-	HANDLE COVER	1
29	-	HANDLE SUPPORT	1
39	541444001	TENSION LEVER	1
40	662068004	M SCREW	1
41	541129001	LED HOUSING	1
42	661414002	M3 AEG SCREW	1
43	662400001	M SCREW M4x0.7 PH TORX T20	1
46	662506002	ST SCREW,STEEL	3
49	692157001	BLADE BACKING PAD,GRADE A CRABIDE	1
50	644140001	DECK	1
51	541127001	FRONT SHROUD	1
52	660997001	TAPTITE SCREW #10-24 PH TORX T25 S	8
53	541126001	REAR SHROUD	1
55	541128001	BLADE COVER	1
56	622548001	FRONT PULLEY AXLE	1
57	560189001	RUBBER WASHER	2
58	690293003	RETAINING RING	1
59	560142001	PULLEY TIRE	2
60	519383001	PULLEY	1
61	659669001	STEEL WASHER	1
63	660988001	M SCREW	1
64	658506001	FLAT WASHER	1
65	658507001	SUPPORT PLATE	1
66	692762001	TENSION BUSH	3
67	660013009	M SCREW	3
68	694102001	BUSH	1
69	622546001	CAM	1
70	697982001	BUSH,CAM BUSHING	1
71	674006001	DRIVER PLATE STOP PINS	2
72	658509001	CONTACT PLATE	1



# M12 FBS64

SERVICE PARTS LIST

TTI Model Number: 018 542 007

M12 FUEL™ COMPACT BANDSAW

Bulletin Date:

**Feb-21**

Starting Serial Number:

VERSION A -

ITEM	PART NUMBER	PART DESCRIPTION	QTY (PCS)
73	698673001	SPRING	2
74	658508001	DRIVER PLATE	1
75	541290001	LATCH	2
77	661133001	TAPTITE SCREW, STEEL	4
78	682459001	DEEP GROOVE BALL BEARING	8
79	661170001	12-24UNC-2A CH SLOTTED	4
80	632716001	WASHER	4
81	672278001	PIN	2
83	661889003	M SCREW	1
84	659183001	SHOE,STEEL,STAMPING018542 M12 FUEL	1
85	641687001	ROLLER BLOCK	1
86	681339002	BALL BEARING	2
87	902493001	TIRE CLEANING BRUSH	1
88	522318001	TIRE CLEANING BRUSH COVER	1
89	661004001	TAPTITE SCREW,STEEL	2
91	622541001	OUTPUT SHAFT	1
92	658518002	WEAR PLATE	1
93	658510001	OUTPUT SHAFT RETAINING PLATE	1
94	661065001	M SCREW M3.5X0.6 FH TORX T15	4
95	316137002	REAR PULLEY	1
96	658774001	REAMER DETENT SPRING PLATE	3
97	658649001	REAMER RETAINING WASHER	1
98	661299002	1/4"-20UNC TH HEXAGON RECESS B	2
99	204402022	OUTPUT SHAFT ASSEMBLY	1
101	208542003	PCBA KIT	1
102	204542005	DECK ASSEMBLY	1
103	204542004	HANDLE KIT	1
104	208542004	ROTOR ASSEMBLY	1
105	204542003	MOTOR HOUSING KIT	1
106	208542005	GEARBOX KIT	1
107	204542016	TENSIONING MECHANISM ASSEMBLY	1
108	204542006	REAR PULLEY KIT	1
109	204542007	HOOK ASSEMBLY	1
110	204542008	FRONT PULLEY ASSEMBLY	1
111	204542009	BLADE COVER KIT	1
112	204542010	LOCK OFF SHUTTLE KIT	1
113	204542011	SHOE KIT	1



# M12 FBS64

SERVICE PARTS LIST

TTI Model Number: 018 542 007

M12 FUEL™ COMPACT BANDSAW

**Bulletin Date:**

**Feb-21**

**Starting Serial Number:**

**VERSION A -**

ITEM	PART NUMBER	PART DESCRIPTION	QTY (PCS)
114	204542012	LED HOUSING KIT	1
115	204542013	FRONT SHROUD KIT	1
116	204542014	REAR SHROUD KIT	1
117	204542015	TENSIONING LEVER KIT	1
118	307228004	BMC	1
119	204402006	TIRE BRUSH KIT	1
120	204402018	TENSION CAM KIT	1
121	204542017	TENSIONING SWITCH KIT	1
122	204402008	REAR GUIDE ROLLER KIT	1
123	204402007	FRONT GUIDE ROLLER KIT	1
130	941123311	RATING LABEL (NOT SHOWN)	1



# M12 FBS64

SERVICE INSTRUCTION

TTI Model Number: 018 542 007

M12 FUEL™ COMPACT BANDSAW

Bulletin Date:

Feb-21

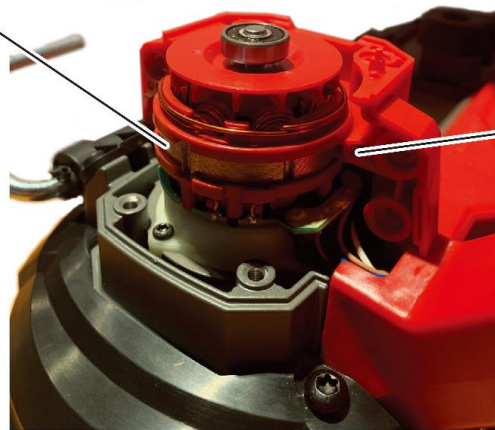
Starting Serial Number:

VERSION A -

As an aid to reassembly, take notice of wire routing and position in wire guides and traps while dismantling tool. Be careful and avoid pinching wires between handle halves and between deck and metal cover plate when assembling.

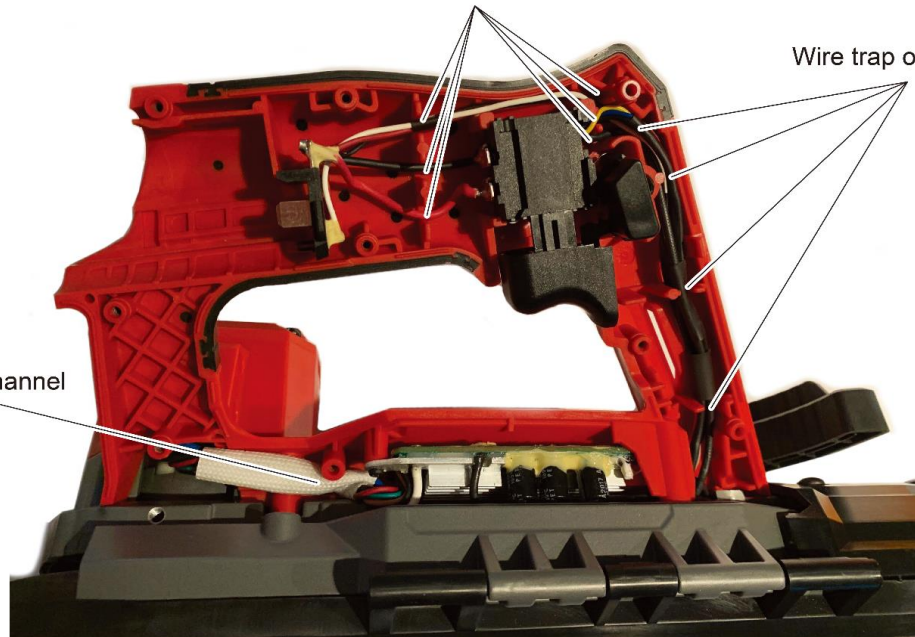
Ensure rib on Motor Housings (15, 22) is fixed into the Stator lamination slot.

Stator lamination slot



Rib

Wire trap or channel



Wire trap or channel

Wire trap or channel



# M12 FBS64

SERVICE INSTRUCTION

TTI Model Number: 018 542 007

M12 FUEL™ COMPACT BANDSAW

Bulletin Date:

Feb-21

Starting Serial Number:

VERSION A -

## Lubrication

