



M12 BRAID

SERVICE PARTS DIAGRAM

TTI Model Number: 018 146 011

M12 1/4" HEX RIGHT ANGLE IMPACT DRIVER

Bulletin Date:

Jun-20

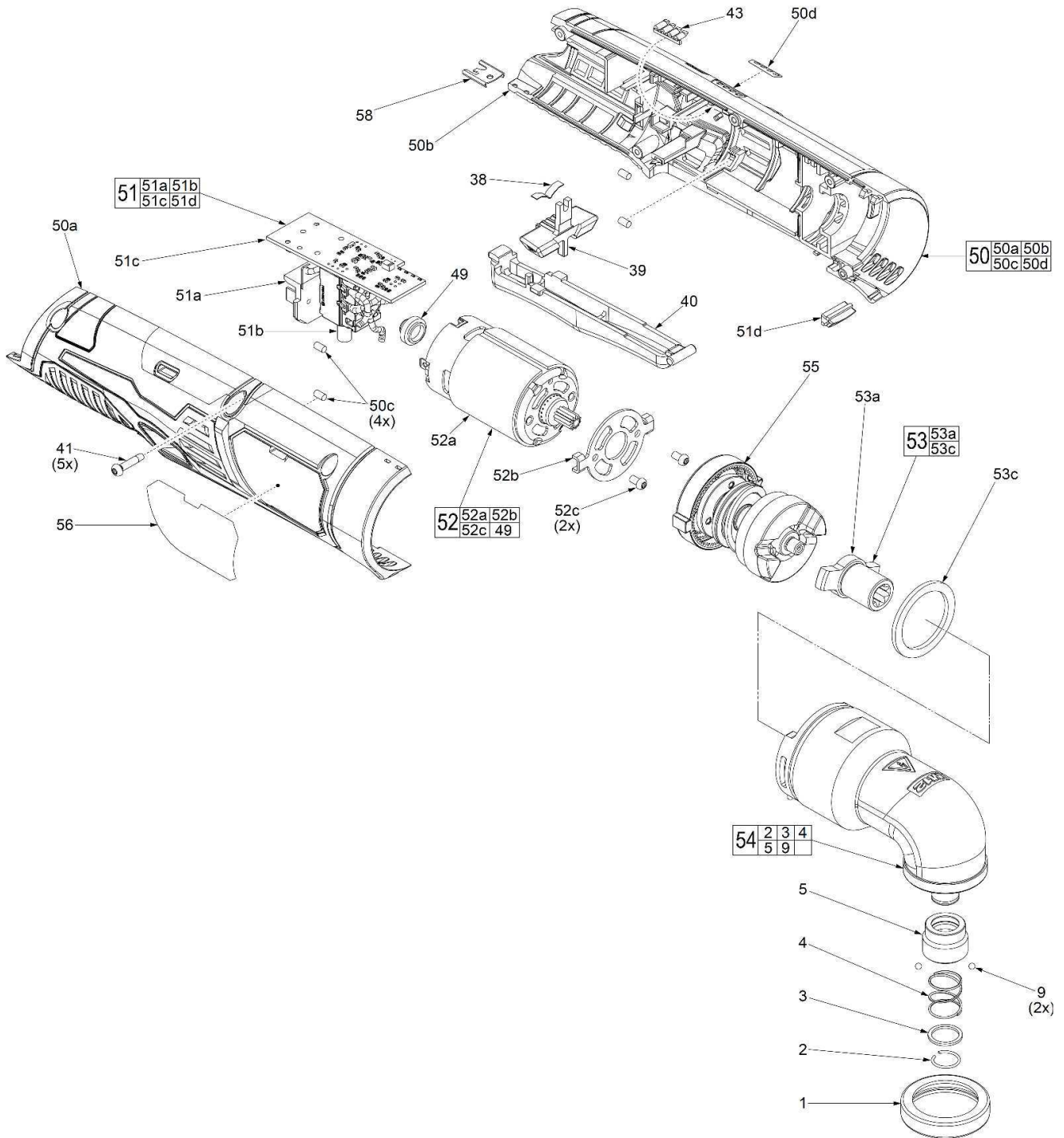
Starting Serial Number:

VERSION A - D2016

00 0

EXAMPLE:

Component Parts (Small #)
Are Included When Ordering
The Assembly (Large #).



	M12 BRAID SERVICE PARTS LIST	Bulletin Date: Jun-20
	TTI Model Number: 018 146 011 M12 1/4" HEX RIGHT ANGLE IMPACT DRIVER	Starting Serial Number: VERSION A - D2016

ITEM	PART NUMBER	PART DESCRIPTION	QTY (PCS)
1	563437001	RUBBER BUMPER RING	1
2	694028001	RETAINING RING	1
3	635232001	WASHER	1
4	694029001	SPRING	1
5	694031001	SLEEVE	1
9	680079001	2.5MM STEEL BALL	2
38	633852003	SPRING PLATE	1
39	528806001	FORWARD / REVERSE SHUTTLE	1
40	528807001	TRIGGER	1
41	660570005	M13 X 14MM SCREW	5
43	591458001	FUEL GAUGE LENS	1
49	563476001	MOTOR BRUSH SEAL	1
50	203751001	HOUSING ASSEMBLY	1
50a	-	HOUSING COVER, RIGHT	1
50b	-	HOUSING SUPPORT, LEFT	1
50c	562951001	RUBBER SLUG	4
50d	-	FUEL GAUGE LABEL	1
51	208041001	ELECTRONICS ASSEMBLY	1
51a	-	BATTERY CONNECTOR BLOCK	1
51b	-	ON-OFF SWITCH	1
51c	-	PCBA	1
51d	-	LED ASSEMBLY	1
52	208046001	MOTOR ASSEMBLY WITH PINION	1
52a	741115011	MOTOR	1
52b	635454001	MOTOR MOUNT PLATE	1
52c	660380009	MOTOR MOUNT SCREW	2
53	203748001	ANVIL ASSEMBLY	1
53a	621664001	ANVIL	1
53c	529061001	NYLON WASHER	1
54	203747001	1/4" HEX GEARCASE ASSEMBLY	1
55	203746001	HAMMER ASSEMBLY	1
56	941048062	SERVICE NAMEPLATE	1
58	631542003	HOUSING CONNECTION CLIP	1



M12 BRAID

SERVICE INSTRUCTION

TTI Model Number: 018 146 011

M12 1/4" HEX RIGHT ANGLE IMPACT DRIVER

Bulletin Date:

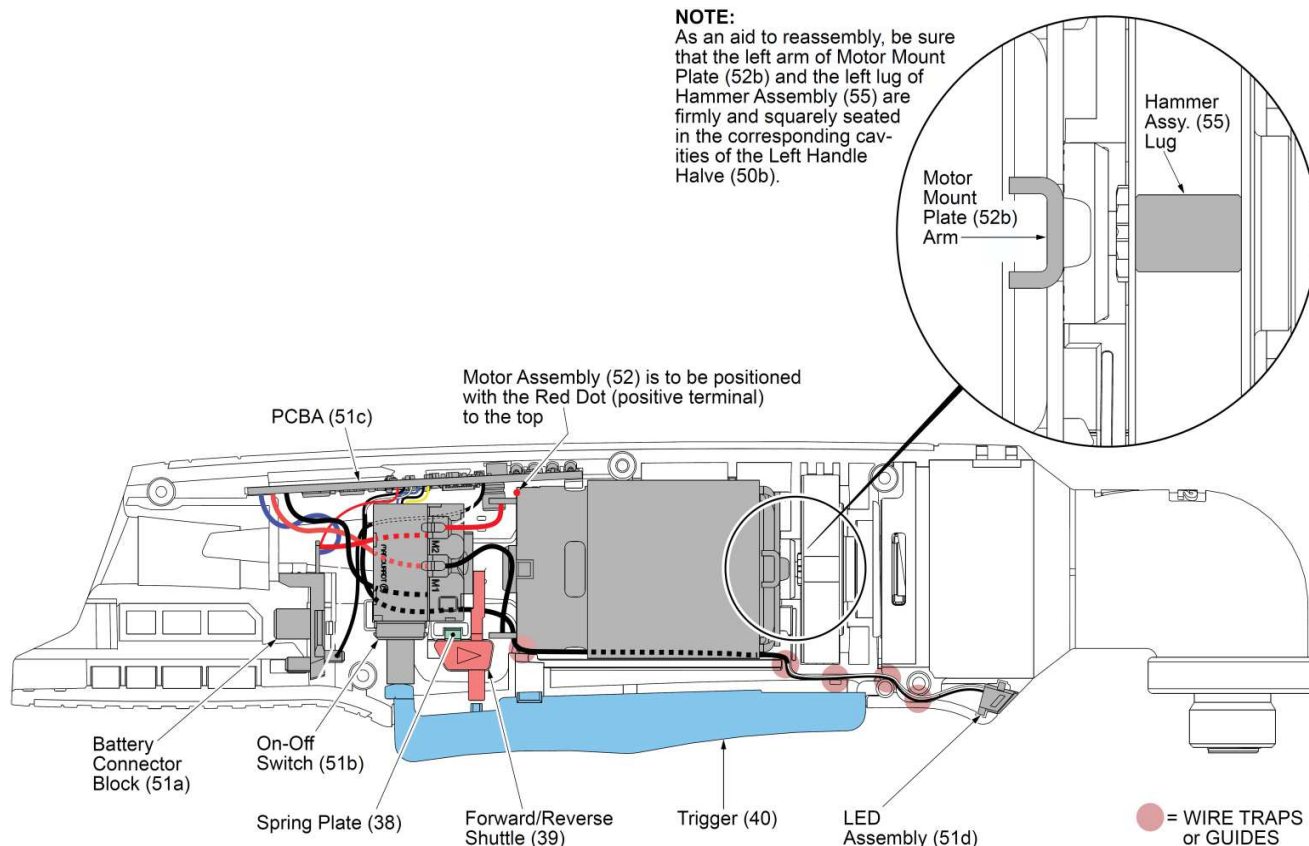
Jun-20

Starting Serial Number:

VERSION A - D2016

NOTE:

As an aid to reassembly, be sure that the left arm of Motor Mount Plate (52b) and the left lug of Hammer Assembly (55) are firmly and squarely seated in the corresponding cavities of the Left Handle Halve (50b).



AS AN AID TO REASSEMBLY, TAKE NOTICE OF WIRE ROUTING AND POSITION IN WIRE GUIDES AND TRAPS WHILE DISMANTLING TOOL.

BE SURE THAT ALL COMPONENTS OF THE ELECTRONICS KIT ARE SEATED FIRMLY AND SQUARELY IN THE HANDLE RECESSES.

AVOID PINCHED WIRES. BE SURE THAT ALL WIRES AND SLEEVES ARE PRESSED COMPLETELY DOWN IN WIRE GUIDES AND TRAPS.

PRIOR TO INSTALLING THE HANDLE COVER ONTO THE HANDLE SUPPORT, BE SURE THAT THERE ARE NO INTERFERENCES.