



M12 BIW12

SERVICE PARTS DIAGRAM

TTI Model Number: 018 068 049, 050, 066

M12™ BRUSHED GEN2 1/2" IMPACT WRENCH

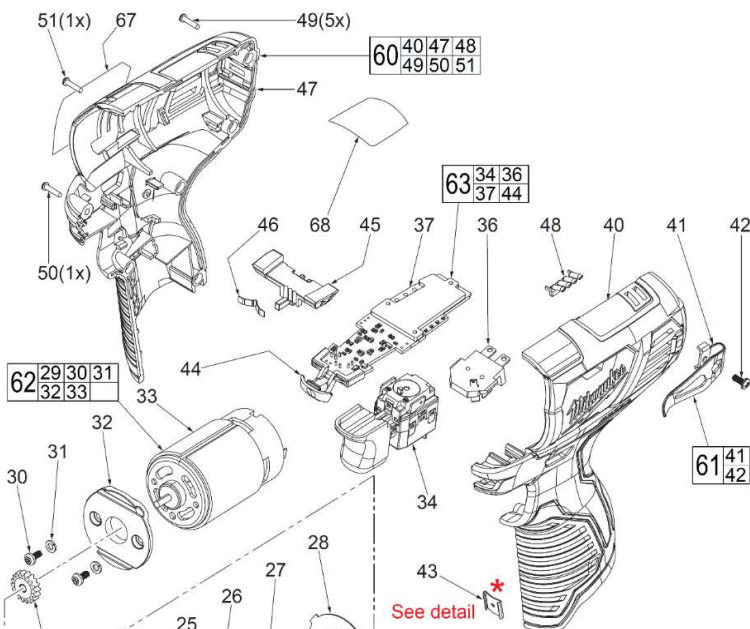
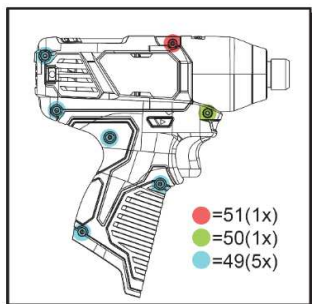
Bulletin Date:

Apr-20

Starting Serial Number:

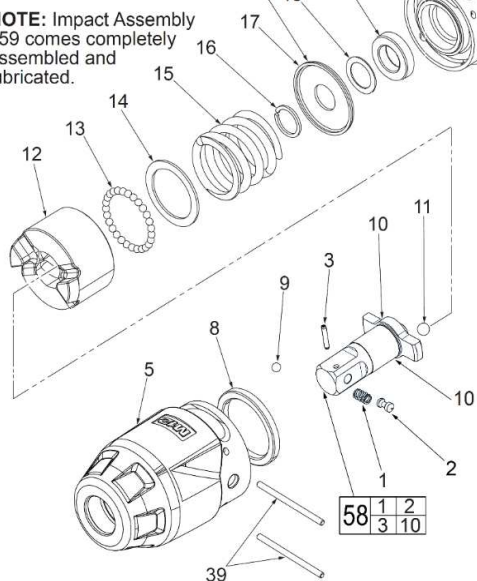
VERSION A - E2014

EXAMPLE:
Component Parts (Small #) Are Included
When Ordering The Assembly (Large #)

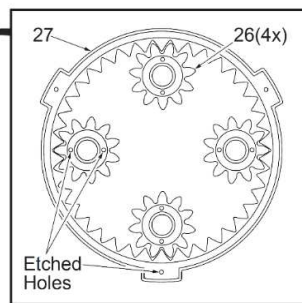


59 12 13 14 15 16 17 18 19 20
21 22 23 24 25 26 27 28

NOTE: Impact Assembly #59 comes completely assembled and lubricated.



IMPORTANT:
If during Motor replacement the gearing from the Impact Assembly becomes dislodged, it is to be noted that the Ring Gears #24 and #27 and the Planet Gears #23 and #26 look the same but are different! The 1st stage gearing (26 and 27) are marked with etched holes as shown. The 2nd stage gearing will not have these markings.



***** Original Design 631542001
Improved Design 631542003
M12™ tools utilize two different Housing Connection Clip designs depending on the Handle Set. See page two for details.

FIG. LUBRICATION

(Type 'J' Grease, Item 1200):

- 5 Coat inside of bushing inside front gearcase with grease.
- 10 Lightly coat front washer surface of anvil (10) with grease.
- 29 Coat pinion of motor assembly (62) with grease.



	<h1>M12 BIW12</h1> <p>SERVICE PARTS LIST</p>	<p>Bulletin Date: Apr-20</p>
	<p>TTI Model Number: 018 068 049, 050, 066</p> <p>M12™ BRUSHED GEN2 1/2" IMPACT WRENCH</p>	<p>Starting Serial Number: VERSION A - E2014</p>

ITEM	PART NUMBER	PART DESCRIPTION	QTY (PCS)
1	693164009	SPRING, MUSIC WIRE	1
2	673160010	DETENT PIN	1
3	673021007	COILED PIN	1
5	642002005	GEARCASE ASSEMBLY WITH BUSHING	1
8	524651001	NYLON RING	1
9	670219001	3.5MM STEEL BALL	1
10	621352098	1/2" DETENT PIN ANVIL	1
11	670219001	5.0MM STEEL BALL	1
12	693116027	HAMMER	1
13	670221001	3.0MM STEEL BALL	27
14	634290002	WASHER	1
15	693164008	COMPRESSION SPRING	1
16	680336001	RETAINING RING	1
17	680335088	WASHER	1
18	634640001	WASHER	1
19	680414001	BALL BEARING	1
20	591343001	GEAR HOUSING	1
21	680015001	4.7MM STEEL BALL	2
22	621338025	CAM SHAFT	1
23	611575008	2ND STAGE PLANET GEAR	4
24	611574007	2ND STAGE RING GEAR	1
25	611573009	2ND STAGE SUN GEAR AND CARRIAGE	1
26	611575007	1ST STAGE PLANET GEAR	4
27	611574006	1ST STAGE RING GEAR	1
28	680335088	WASHER	1
29	611573008	MOTOR PINION	1
30	660211062	M3.0 SCREW	2
31	670028003	LOCK WASHER	2
32	591338001	MOTOR MOUNTING BRACKET	1
33	740215006	MOTOR	1
34	-	SWITCH	1
36	-	BATTERY CONTACT PLATE	1
37	-	PCBA	1
38	673165001	M2.5 X 30MM PIN	2
39	680334029	M2.5 X 36.7MM PIN	2
40	-	LEFT HANDLE HALVE	1

	<div> M12 BIW12 SERVICE PARTS LIST TTI Model Number: 018 068 049, 050, 066 M12™ BRUSHED GEN2 1/2" IMPACT WRENCH </div>	<div> Bulletin Date: Apr-20 Starting Serial Number: VERSION A - E2014 </div>
-----------------------------------------------------------------------------------	-----------------------------------------------------------------------------------------------------------------------------------------------------	-------------------------------------------------------------------------------------------------------------------------

ITEM	PART NUMBER	PART DESCRIPTION	QTY (PCS)
41	634097001	BELT CLIP	1
42	661703001	M3.0 SCREW	1
43	631542003	HOUSING CONNECTION CLIP	1
44	-	LED LENS	1
45	591443001	FORWARD/REVERSE SHUTTLE	1
46	633852003	SPRING PLATE	1
47	-	RIGHT HANDLE HALVE	1
48	591339001	LIGHT PIPE	1
49	660570005	M3 X 14MM SCREW	5
50	660230010	M3 X 16MM SCREW	1
51	660230017	M3 X 20MM SCREW (NEW)	1
51	660230009	M3 X 20MM SCREW (OLD)	1
58	202935001	1/2" SQUARE ANVIL ASSEMBLY	1
59	202489001	IMPACT ASSEMBLY	1
60	202491002	HANDLE SET	1
61	202186001	BELT CLIP ASSEMBLY	1
62	202493001	MOTOR ASSEMBLY	1
63	202494002	ELECTRONICS ASSEMBLY	1
67	941048030	SERVICE NAMEPLATE	1
68	941300033	WARNING LABEL	1
69	305797001	CARRYING CASE	1
1200	-	TYPE J GREASE	1



M12 BIW12

SERVICE INSTRUCTION

TTI Model Number: 018 068 049, 050, 066

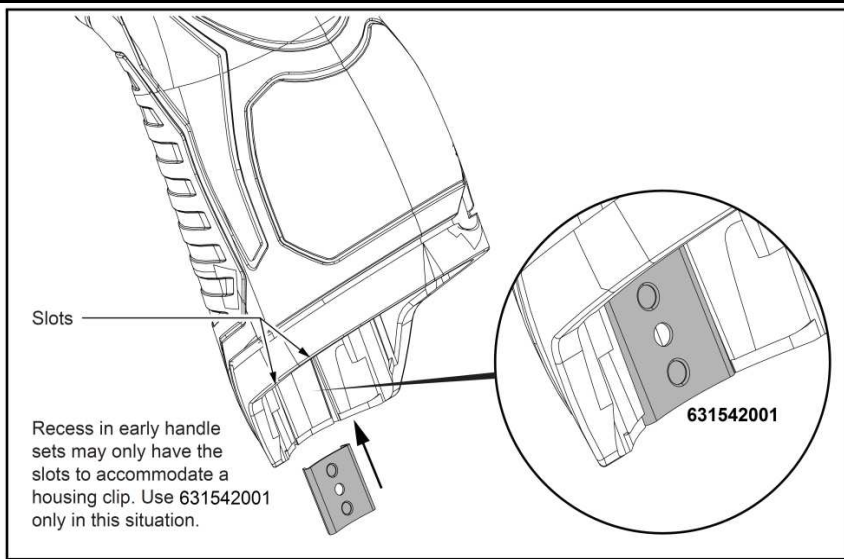
M12™ BRUSHED GEN2 1/2" IMPACT WRENCH

Bulletin Date:

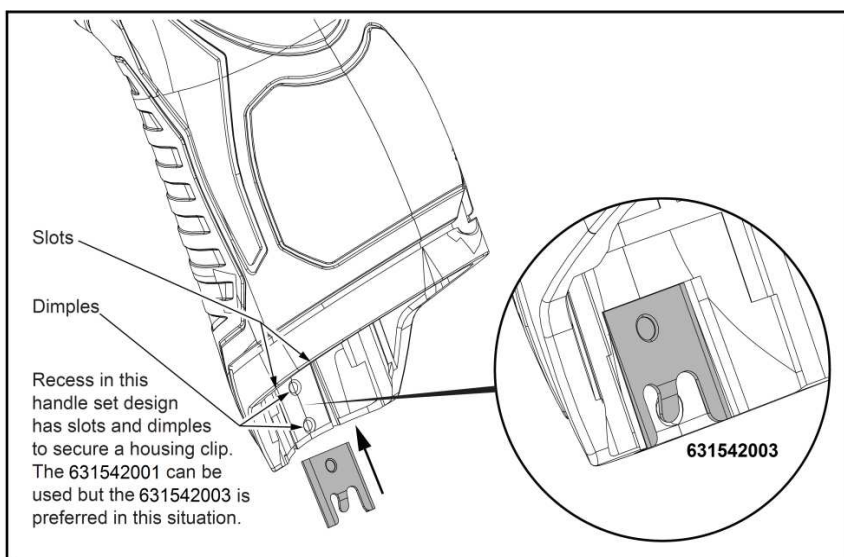
Apr-20

Starting Serial Number:

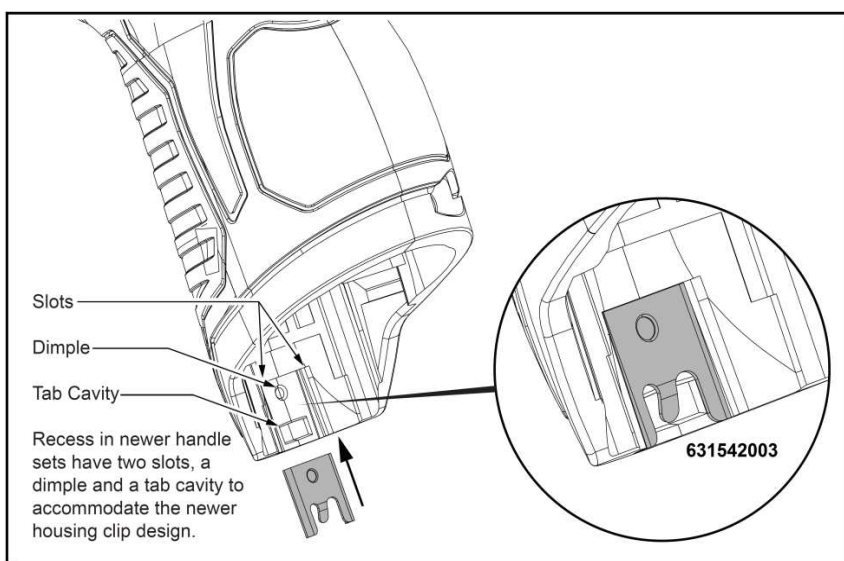
VERSION A - E2014



Early M12™ Handle Sets utilize **Housing Connection Clip No. 631542001**. Install this clip design by aligning the side rails of the clip with the two slots in the handle set. Gently push into place with the aid of a small flat blade screwdriver or a similar instrument. Be sure that the clip is properly seated in both slots and that the clip is flush to sub-flush to the end of the handle set. To remove the clip, use the same small flat blade screwdriver or a similar instrument and push the clip out of the handle set. If the clip is loose or will not stay in place, a needle nose pliers can be used to gently bend/pinch the side rails of the clip. If the clip is damaged do not use, replace with a new 631542001 housing clip.



Updated M12™ Handle Sets utilize **Housing Connection Clips No. 631542001 and 631542003**. (The 631542003 is a preferred upgrade). Install this clip design by aligning the side rails of the clip with the two slots in the handle set. Gently push into place with the aid of a small flat blade screwdriver or a similar instrument. Be sure that the clip is properly seated in both slots and that the tab of the clip snaps down in the round dimpled cavity of the handle set. Be sure that the clip is flush to sub-flush to the end of the handle set. To remove the clip, use the same small flat blade screwdriver or a similar instrument and lift up on the clip tab while pushing the clip out of the handle set. Use a needle nose pliers to gently rebend the clip tab if necessary. If the tab on the clip is damaged during this process and is loose or will not stay in place, replace with a new 631542003 clip.



Newer M12™ Handle Sets utilize **Housing Connection Clip No. 631542003**. Install this clip design by aligning the side rails of the clip with the two slots in the handle set. Gently push into place with the aid of a small flat blade screwdriver or a similar instrument. Be sure that the clip is properly seated in both slots and that the tab of the clip snaps down in the rectangular cavity of the handle set. Be sure that the clip is flush to sub-flush to the end of the handle set. To remove the clip, use the same small flat blade screwdriver or a similar instrument and lift the clip tab out of the cavity while pushing the clip out of the handle set. Use a needle nose pliers to gently rebend the clip tab if necessary. If the tab on the clip is damaged during this process and is loose or will not stay in place, replace with a new 631542003 clip.



M12 BIW12

SERVICE INSTRUCTION

TTI Model Number: 018 068 049, 050, 066

M12™ BRUSHED GEN2 1/2" IMPACT WRENCH

Bulletin Date:

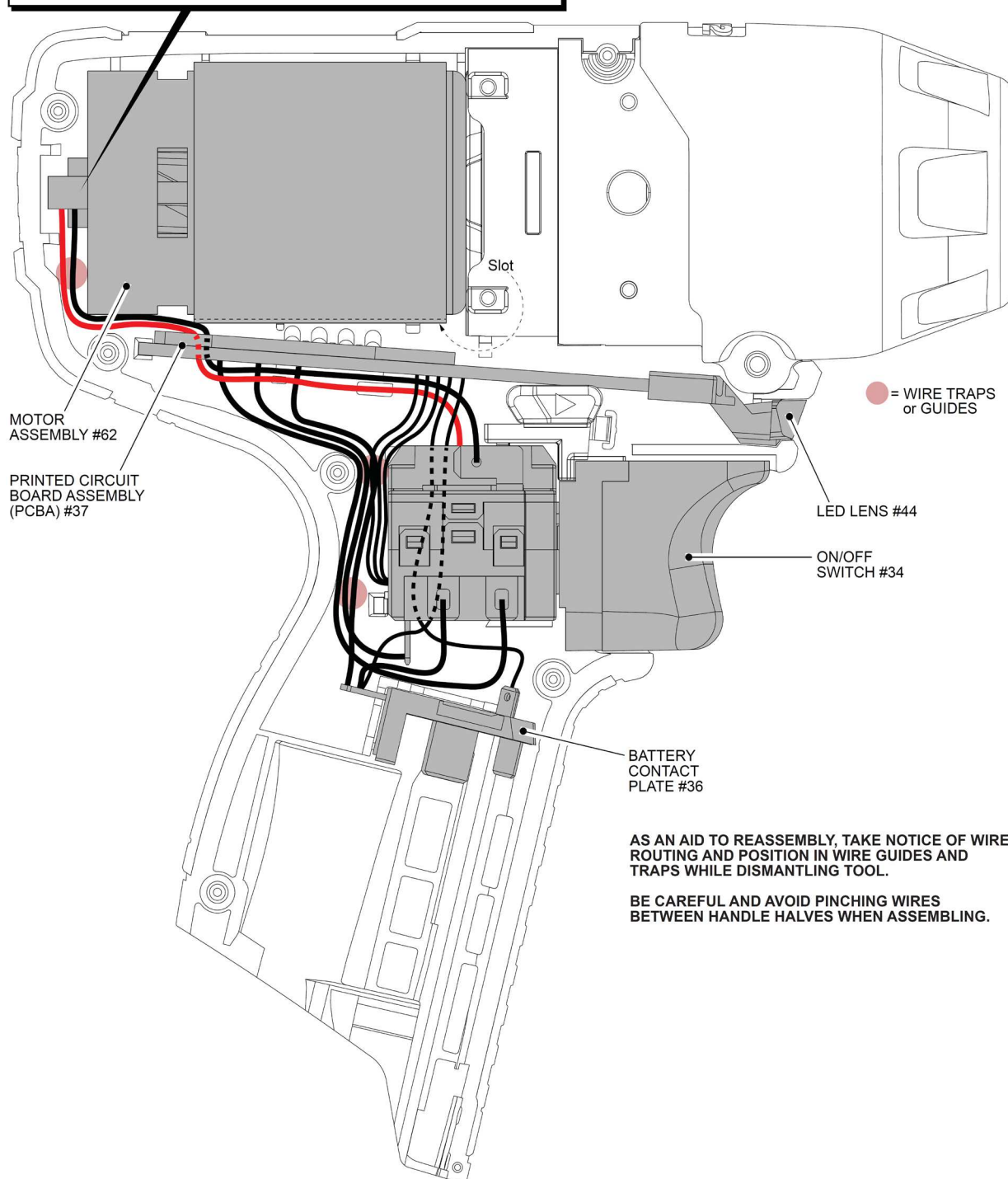
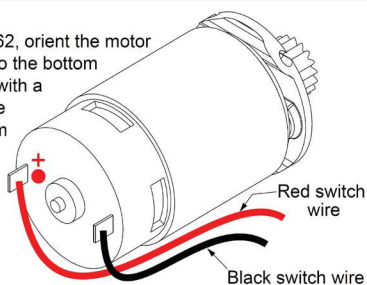
Apr-20

Starting Serial Number:

VERSION A - E2014

NOTE:

When installing Motor Assembly #62, orient the motor with the slot in the motor canister to the bottom and the positive terminal (marked with a red dot) to the inside of Left Handle Halve #40. Solder the red wire from the top left position of the switch to the positive motor terminal. Solder the black wire from the top right position of the switch to the negative terminal on motor.



AS AN AID TO REASSEMBLY, TAKE NOTICE OF WIRE ROUTING AND POSITION IN WIRE GUIDES AND TRAPS WHILE DISMANTLING TOOL.

BE CAREFUL AND AVOID PINCHING WIRES BETWEEN HANDLE HALVES WHEN ASSEMBLING.